

Venue Hire

at Lauderdale House



“ Thank you for all your help in making our party such a success. Everybody said that the room looked a treat! ”

DAVID & DEBBIE

Welcome to Lauderdale House

Dating back to 1582, Lauderdale House is an impressive Grade II* listed building known for its vibrant gardens and stunning views in Highgate, North London.

Rich in history and culture, Lauderdale House counts actress Nell Gwynn, King Charles II and diarist Samuel Pepys among its distinguished visitors. Our beautiful galleries can host parties, weddings, celebrations, funerals and memorials, with options to accommodate both large and intimate events.

Lauderdale offers an idyllic atmosphere while still easily accessible with public transport. Our friendly and experienced Events team will be available from your first enquiry to help you plan your day at this stunning country house in the city.

Lauderdale House is a registered charity and runs as an arts centre for our local community. The funds raised from venue hire goes to support our education, outreach and heritage projects.

Contact our Events team to arrange a tour of the spaces and to discuss your requirements on 020 8348 8716 or enquiries@lauderdale.org.uk.

“ Your staff were terrific, the food garnered so many compliments & the bar staff were great. The party was a stellar success! ”

MARION





1822



1870



1912



2022

Our tale

begins in 1582

The original House was built in 1582 for Sir Richard Martin – Master of the Mint and three times Lord Mayor of London – and his wife, Dorcas Martin. Over the next 60 years, it was lived in by various individuals until it was bequeathed to Lady Anne Home, wife of the Scottish Royalist John Maitland, the 1st Duke and 2nd Earl of Lauderdale, from whom we get our name.

During the Civil War and Restoration years, the House was passed between Royalist and Parliamentary supporters until it was eventually returned to Lady Anne Home. The Earl of Lauderdale was a key advisor to King Charles II, whose mistress, the renowned actress Nell Gwynn, lived here for a short time with their infant son, the Duke of St. Albans.

Lauderdale's last private owner was Sir Sidney Waterlow, another Lord Mayor of London, and he leased it for a time to St Bartholomew's Hospital as a convalescent home. By 1889 the House lay empty, so Sir Sidney gave the House and grounds to London County Council 'for the enjoyment of Londoners'. The 29 acres of land became a public park, and the House was restored in 1893 to serve as a park tearoom and park-keepers' flats. Sadly, during the course of further renovation in 1963, a fire broke out, destroying the roof and much of the interior of the House.

After lying derelict for 15 years, the local community established Lauderdale House Society, the charity which now runs the House. In 1978, after much fundraising and lobbying, the ground floor of the House was opened as an arts and education centre by Yehudi Menuhin, widely acknowledged as one of the finest violinists of the 20th century.

Today, Lauderdale House is a vibrant hub at the centre of the community, with artistic opportunities for young people, an art gallery with exhibitions for both local and celebrated artists, and a concert hall featuring everything from free classical lunchtime concerts to world-renowned jazz. By choosing to hold your event at Lauderdale House, you are directly helping the people and communities who benefit from these services.



Lower Gallery & Entrance Hall

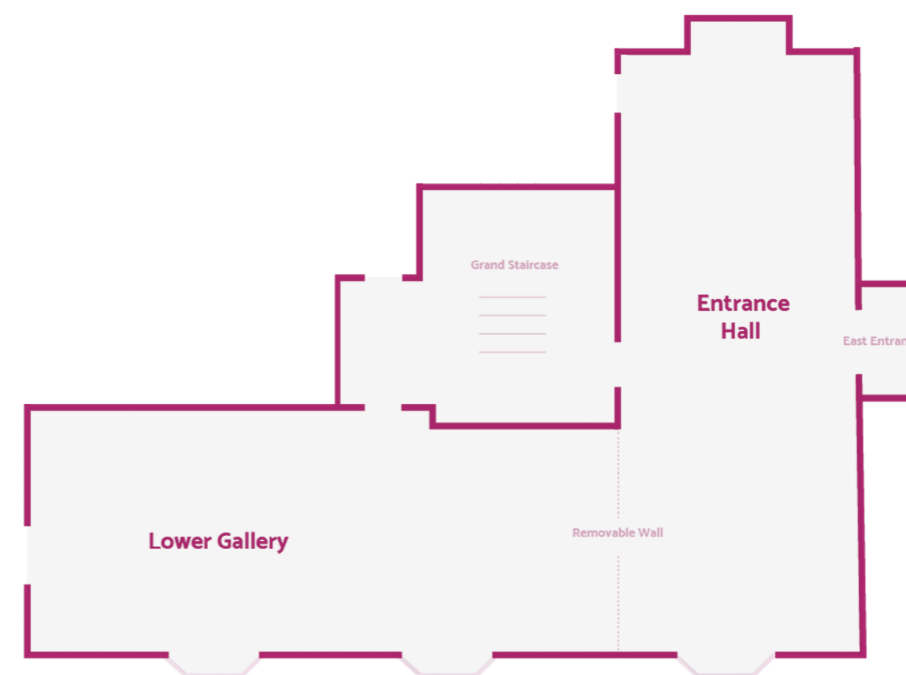
The Lower Gallery & Entrance Hall is a flexible ground floor space which can be set up as two separate function rooms or enjoyed as one large reception space. Boasting original Tudor features and Georgian columns, this area opens out onto the Park through beautiful French windows along the picturesque side terrace.

Capacities

Formal seated reception: 80

Standing champagne reception: 130 (210 when combined with the Conservatory & Courtyard)

Please be aware that the capacities stated can be affected by the set-up and configuration requested for each function. When planning your event, please discuss your requirements with our team and we can advise you which layout would be the best for you.





“ We couldn’t have been happier with how the day went. We would definitely recommend Lauderdale House, a beautiful venue in north London with fantastic staff! ”
LIZ & STEPHEN

Long Gallery

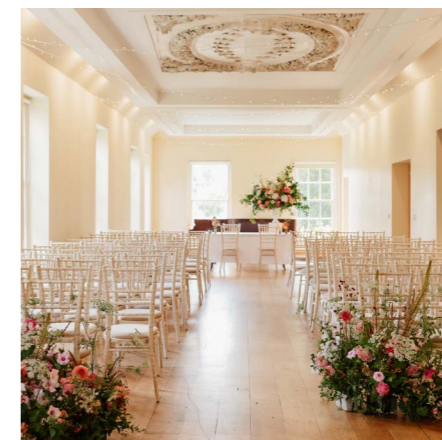
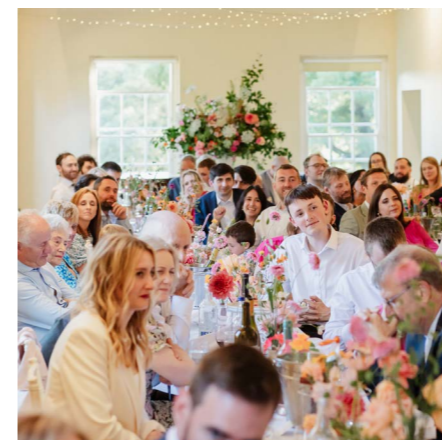
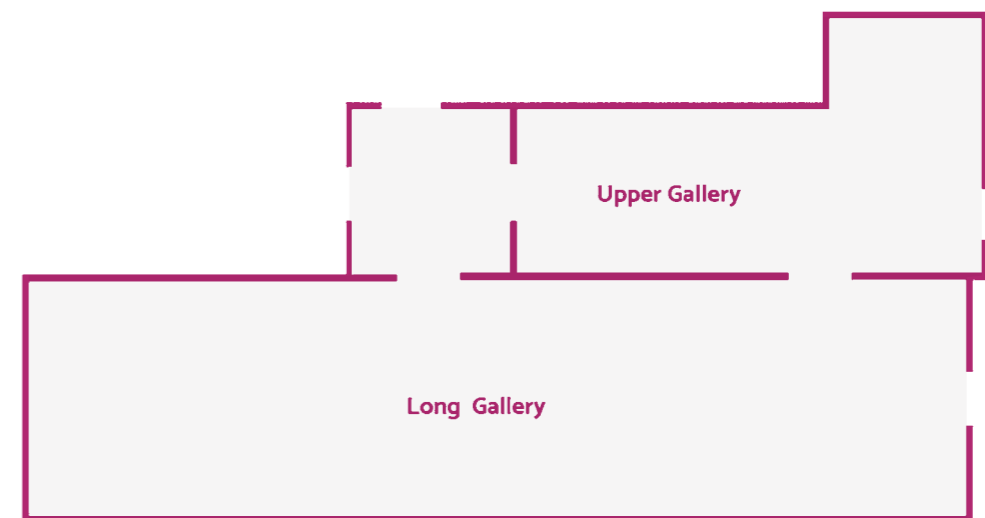
The Long Gallery is on the first floor with stunning views over the Tea Lawn and gardens. The period windows, Tudor fireplace, Erard grand piano and 18th-century ceiling feature create a truly charming space full of character and atmosphere. A lift ensures this first floor room is accessible to all guests.

Capacities

Formal seated reception: 120

Standing champagne reception: 110

Please be aware that the capacities stated can be affected by the set-up and configuration requested for each function. When planning your event, please discuss your requirements with our team and we can advise you which layout would be the best for you.



Conservatory & Courtyard

Built on the site of a Victorian conservatory, the Conservatory's brick design complements the Tudor walls of the Tea Lawn and reflect the history of the space. It is a modern, flexible and airy room with lots of natural light from the large glass doors, which provide direct access to the Tea Lawn.

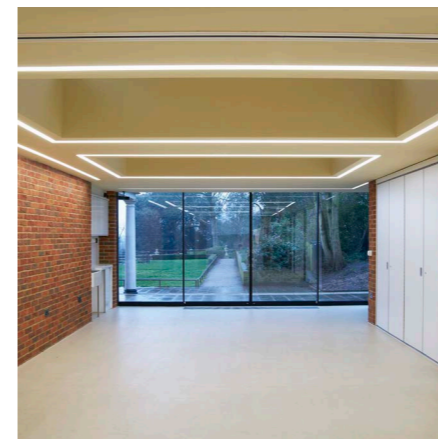
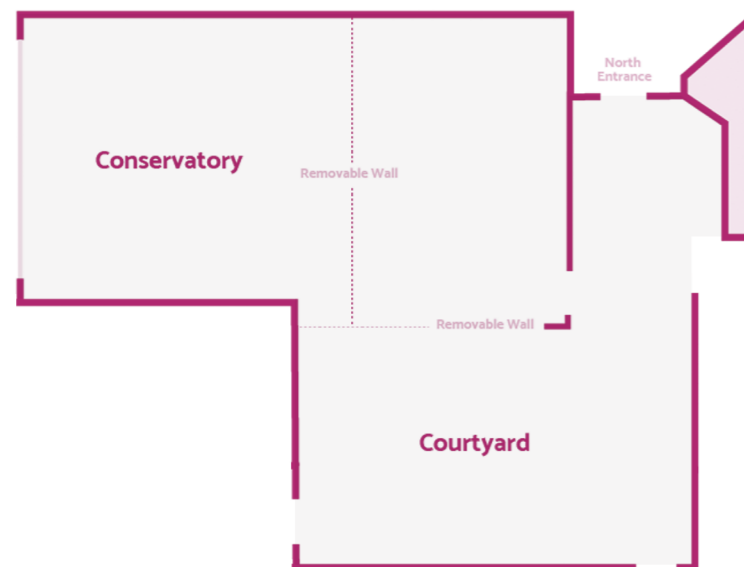
The space increases in size when it opens out into the internal Courtyard, which, with its glass ceiling, makes a relaxed area for a buffet, canapés and drinks. It also has the potential to be used alongside the Lower Gallery & Entrance Hall to accommodate more guests.

Capacities

Formal seated reception: 50

Standing champagne reception: 60

Please be aware that the capacities stated can be affected by the set-up and configuration requested for each function. Depending on your requirements, we can open up the courtyard for more space for an additional fee. Please speak to a member of our events team for a bespoke quote.



Waterlow park

Waterlow Park was once the private estate of Sir Sydney Waterlow. In 1889, he generously presented the land to London County Council, designating the area as 'a garden for the gardenless'. It was renovated in 2005 and is now a popular scenic space enjoyed by all. With beautiful historic features and a variety of plants and trees, it provides the perfect backdrop for photos.

You and your guests are welcome to go anywhere in the Park during its usual opening hours, which are from early morning until dusk. After dusk, when the Park is closed, you and your guests will have exclusive use of the side terrace by the French windows and the Tea Lawn at the back of the House.

“ Working with you was a breeze! You were superbly supportive and the food delicious! ”

ALAN



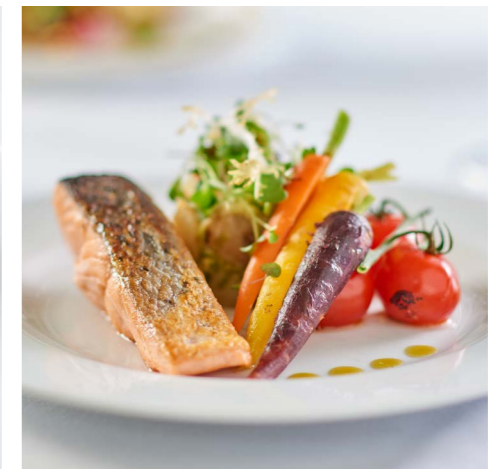


Food & Drink

Our catering partners, Pink Food, have a fantastic range of options to suit your vision and budget. From champagne and canapés receptions to plated meals, Pink's menus feature the highest-quality local ingredients and offer options for all dietary requirements.

Pink Food have worked with us since 2016, and their vast experience will help enhance your day. For Pink Food, it is all about great ingredients, cooked simply and stunningly presented. This approach has brought them to the very top of the industry, with a reputation for quality at every level.

Their team of dedicated chefs and event managers will work with you from the very beginning of your enquiry. To find out more about Pink Food and to begin discussing your catering requirements, please get in touch via kim@pinkfood.co.uk.



“ Thank you for the amazing foods & service at my birthday party, making it the most memorable day for me and my family. Folk RAVED about the food, and you were so attentive and caring. ”

JACQUI



Hire costs

We hire our galleries by the hour - so you can have your event for as long as you want. We charge from the beginning of set up time until the last guest has left. We have made our costs as transparent as we can to make organising your event as easy as possible, instead of spending time deciphering tricky pricing.

Generally, it takes between 1.5 and 2.5 hours to set up the space(s), depending on the nature and scale of the function. To ensure everyone has the chance to finish their food and drinks and say their goodbyes, we have a 30-minute ‘wind down’ before the end of every booking, which is when the music and food/drink service will stop. At least two stewards are required for all events. The role of the steward is to assist with the delivery of an enjoyable, safe and secure experience for you and your guests.

Please find a breakdown of our prices below.

Hire Charge by the hour:	2026	2027	2028
Lower Gallery/Entrance OR Long Gallery	£385	£395	£405
Conservatory	£220	£225	£230
Two room rate	£540	£555	£570
<i>(Lower Gallery/Entrance Hall with either the Long Gallery OR the Conservatory)</i>			
Additional costs:			
Event steward (per steward)	£120	£125	£130
Cleaning	£195	£200	£205

Frequently Asked Questions

Can I book the outside spaces in the Park?

Lauderdale House is situated in Waterlow Park, which is a public park owned by Camden Council. Like other park users, your guests are free to be anywhere in the park until it closes at dusk. While there is no private use of any areas in the Park during its opening hours, we have been hosting weddings here for over 40 years and have always found other visitors very respectful and happy to give wedding parties plenty of space and privacy. When the Park closes at dusk, you and your guests may continue to use the side terrace by the French windows and the Tea Lawn at the back of the house

Can I put furniture - such as tables and chairs - in the park?

There are benches on the terrace which your party are welcome to use. As the Park is open to the public, we cannot have any furniture outside.

Can I use an external catering company/bring my own catering?

We do not offer dry hire or invite external caterers. We want your event to run as smoothly as possible, and that means not having to worry about food hygiene, quality or working around the quirks of our heritage prep spaces. As such, we have partnered with Pink Food, a talented team who have a fantastic range of options to suit your vision and budget. From champagne and canape receptions to plated meals,

their menus are crafted to ensure only the highest-quality local ingredients are used to offer options for all dietary requirements.

Can you hold a date for me?

We want to make sure that all of your most important guests can come to your event, so we are happy to provisionally hold your preferred date for you for up to two weeks without a deposit.

I love the venue – how do I confirm my booking?

Once you have let us know you would like to hold your event with us, our Events team will send you an email to confirm the details of your booking. We will then send across an invoice, followed shortly by a secure payment link for 50% of the total hire fee. Your booking is confirmed with us once we receive the deposit. The remaining 50% will be due six weeks prior to your booking. Should your event be within six weeks of your booking, we will ask for the entire payment in one instalment.

What happens if I get sick and need to cancel my event?

As we are a registered charity, all payments made are non-refundable, so we would highly recommend that you invest in insurance, just in case.

Who is my point of contact on the day?

Your stewards will be your contacts for the building. For all matters related to catering, Pink Food will designate a 'Manager on Duty' who will coordinate the rest of their on-site team. All staff will be briefed, as we share a system where we maintain notes about your booking, and will be happy to help where they can.

Can I decorate the venue?

As a Grade II* listed venue, we do not permit anything to be attached to the walls, so it is best to plan your decoration around free-standing or table-top pieces, such as flower arrangements. We do, however, have a series of hooks discretely placed along the ceiling which can be used for bunting or fairy lights. You can also bring battery-powered fairy lights to decorate the railings along the side terrace. No naked flames are permitted in or around the building, but battery-powered LED candles are of course welcome. Our Events team are more than happy to talk through what works well in your chosen space(s), so please do get in touch if you are in doubt.

Can I have live music or a DJ?

You most certainly can! We have several power points in most rooms that can be used as required, as well as two beautiful grand pianos. We always monitor sound levels in and around the venue to ensure our neighbours are not disturbed, but live bands and DJs with amplification are more than welcome during your booking. Before confirming your entertainment, please let us know what set-up you are planning in advance so that we can work with you to ensure everything goes smoothly.

Do you have any speakers, audio equipment, lighting, projectors etc. that we can borrow?

We have the following kit available for use during your event a projector with HDMI and Mac cables, a projector screen, large floor easels, a lectern, and a small PA with a microphone, which can be used for ceremonies and speeches. Please note our PA is not suitable for evening party music. If you are interested in using any of the above equipment, please let us know as soon as possible. Any other lighting/audio equipment will need to be hired in. Please liaise with the Events team to ensure you have booked sufficient set up time and/or space and to verify that it is suitable for our heritage building before hiring in equipment.

How late can we stay and party?

Our late license is until midnight – this is the time by which the last guests needs to have left the building. To ensure everyone has the chance to finish their drinks and say goodbye, we have a 30-minute 'wind down' period before the end of every booking, meaning the music must end by 11.30pm at the latest.

Can I hire in my own furniture?

If you would prefer not to use our in-house furniture, you are more than welcome to hire furniture in. All we request is that you liaise with us regarding dropping off and collecting as we do not have any storage space for additional furniture.

Do you have recommended suppliers?

Having hosted all sorts of events for over 25 years, we know many local suppliers who we will be happy to recommend. Please contact our Events team for our recommended suppliers list.

Will there be an exhibition in place?

We are a proud arts venue and love celebrating local artists in the house. We have three exhibition spaces which we use to host temporary exhibitions year-round, each lasting four weeks. If you feel the artwork would be an issue, we can arrange to have it removed for your event at an additional cost. We will require at least three weeks' notice to arrange this for you.

Will the café be open during my booking?

The Tea Lawn Café, which is run by our catering partners Pink Food, will remain open from 9am on weekdays, 9.30am on weekends, to early evening, but this will not affect your booking. Members of the

public visiting the café will not have any access to your function spaces.

Do you have disabled access?

We are fully accessible for disabled persons. We have a lift to the first floor, and two accessible toilets located on the ground floor. Please let us know in advance if you are expecting any guests with access needs so we can advise on entrances and to ensure staff are briefed on the day if required.

Do you have onsite parking?

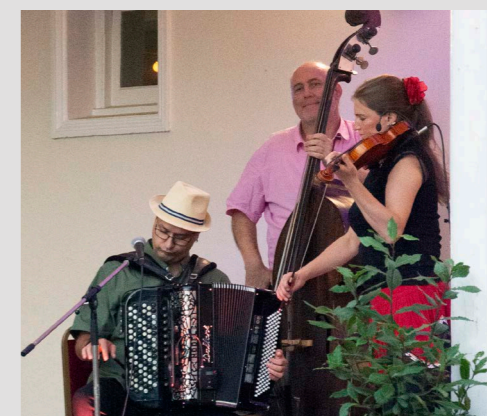
We do not have any onsite parking. There is one Blue Badge parking spot just in front of the building. Highgate Hill (the road directly outside the house) and several other roads in the immediate area have on-street parking which is free all day on Saturdays and Sundays and from midday on weekdays. Pay and display is in operation outside of these times in some of the areas. Please always check signage before you park your vehicle.



A home for creativity

Today, Lauderdale House serves as a creative and tranquil space that welcomes and inspires. Alongside our charming café hosting daily regulars and guests of the Park, we operate as a vibrant community hub with artistic opportunities for young people, an art gallery with exhibitions for both local and celebrated artists, and a concert hall featuring everything from free classical lunchtime concerts to world-renowned jazz. In addition, we are a unique and flexible events space for all kinds of events, from children's parties and milestone birthdays to exclusive hire for weddings.

By choosing to hold your wedding at Lauderdale House, you are directly helping the people and communities who benefit from these services. As a registered charity without regular funding, we rely on our event bookings to keep our artistic programme varied and exciting for the local community. All income from bookings keeps our 450 year old building alive, whilst also providing valuable funding for our youth group, Fresh, and artistic opportunities for local schools and organisations.



Photography

Alexander Stevens - @alexstevensphotography
Pages 3, 14, 15 (middle)

Belinda Burton - bellephotojourney.com
Page 23

Claire Wakefield - clariwakefieldmphotography.co.uk
Pages 1, 7 (top right) & 11

Grae - eyesclosedheadfirst.com
Pages 8 (top & middle), 10, 17 (top left & bottom right), 18, 19, 24

Isabelle Elliott - isabelleelliottphotography.com
Page 15 (bottom right)

Jefferson Smith - jeffersonsmith.co.uk
Page 13 (bottom right, bottom left & top)

Steve Franck - stevefranck.com
Pages 16, 17 (top right & bottom left)

How to find us

Tube: Archway on Northern Line

Bus: 143, 210, 263, 310 (Waterlow Park),
W5 (to Hornsey Lane)

Car: We are situated on Highgate Hill (B519). There is no off-street parking but there is pay and display parking on Highgate Hill. Parking outside the House is free from midday and all day Saturday and Sunday. Please always check the signage before you park your vehicle.

Lauderdale House
Waterlow Park, Highgate Hill
London N6 5HG

lauderdalehouse.org.uk
enquiries@lauderdale.org.uk
020 8348 8716

Lauderdale
House

