

Lauderdale House Society Limited

(Limited by Guarantee)

Lauderdale House Society Limited

(Company Limited by Guarantee)

Registered Number 1352278; Charity Number 275502

Lauderdale
House

Report & Financial Statements

31 March 2025



Warner Wilde Ltd

4 Marigold Drive

Bisley

Surrey GU24 9SF

Contents

Company Information	page 3
Report of the Council of Management	pages 4 to 31
Report of the Independent Examiner	page 32
Statement of Financial Activities	page 33
Balance Sheet	page 34
Statement of Cashflow	page 35
Notes to the Financial Statements	pages 36 to 45

Company Information

Lauderdale House Society Limited was incorporated as a Company Limited by Guarantee, not having a share capital (Number 1352278) on 9 February 1978 and became a Registered Charity (Number 275502) on the same date.

Registered Office & Property Run by the Charity Lauderdale House
Highgate Hill, Waterlow Park, London N6 5HG

The Directors are also Trustees and are referred to as the 'Council of Management'. The members of the Council of Management (also referred to as the 'Board') from 1 April 2024 to 31 March 2025 were:


Anna Haworth (Chair)	
Nick Peacey (Vice Chair)	Roger Freeman (retired 9 June 2025)
Paola Barbarino	Stanley Haines
Peter Barber	Claude MacNaughton (appointed 9 June 2025)
Juliea Ballantyne (appointed 9 June 2025)	Nick Mellor (retired 9 June 2025)
Michael Burman	Naomi Naylor (appointed 9 June 2025)
Laure Duhot	Tim O'Brien (appointed 9 June 2025)
Michael Eldred (appointed 9 June 2025)	Clare Shaw (appointed 9 June 2025)
	Denise Wilkinson

Bankers Lloyds Bank

Independent Examiners Warner Wilde Ltd

The Council of Management has pleasure in submitting its Report and Financial Statements for the year ending 31 March 2025 to the Members of the Lauderdale House Society.

Signed on behalf of the Council of Management


Anna Haworth (Dec 19, 2025 10:58:52 GMT)
Anna Haworth, Trustee

On: 19/12/2025

Principal Activities

Lauderdale House Society was set up to promote the preservation and maintenance of this historic building which was built in 1582 and is listed as Grade II*. We offer a wide range of arts, education, heritage and community activities in the House, at partner venues, and in Waterlow Park where we are situated. We are also an important springboard for an extensive outreach programme across the community. The majority of our users are drawn from local people, the wider community of Camden and neighbouring boroughs. In a 'normal' year our average annual footfall is c.75,000.

As is typical of London, we sit between both very affluent areas and areas of high deprivation. Accordingly, we believe we are well placed to bring local communities together. Our outreach work is key to building relationships with different groups of people from different backgrounds. By integrating a programme of free activities for all ages, we create events where everyone has the opportunity to enjoy, learn and engage with creativity, culture and heritage.

We seek to improve the quality of people's lives, offering them new opportunities as we keep this historic house open for the enjoyment of everyone. This is in keeping with the intention of the original gift of the House and Park, by the Victorian philanthropist Sir Sydney Waterlow, providing arts and heritage for all and a 'garden for the gardenless'. We welcome everyone.

Anna Haworth, Chair's Review 2024 to 2025

2025 was another successful year at Lauderdale House with an expansion of our outreach work with local secondary schools. The 'Fresh' scheme, run with Camden Council youth service, brings in young people from local estates and encourages creative activities. Parents and children from far and wide took part in our Easter trail, the Halloween trail, the heritage weekend family day and the quickly sold-out Santa's grotto.

Music always plays an important part in the life of the House and we were fortunate to retain pianist Stephen Hose to give his (free!) well-attended Tuesday lunchtime concerts. The jazz programme included some extraordinary sessions from long established stars of the jazz world and the Tea Lawn performances drew good audiences.

We continued to offer our lovely spaces for birthdays, weddings and other events – the income from these hires is ploughed back into our arts, education and outreach work. The café has been very popular this year; and the catering for our hire events has been exceptional and very much appreciated by hirers.

During the year, we had a very rewarding drive to recruit new trustees onto the Board, and those selected have brought a wide range of experience from which we are already benefitting. With a tremendous staff team now working in the House, and a good number of excellent volunteers, we look forward to another successful year in 2026.

Overview

2024/2025 was our busiest year since the 2020 pandemic and, possibly, the busiest year in our 'modern' history combining an increased number and range of creative, educational and heritage activities with an extensive social and community hire programme. The 2016/17 refurbishment created a building which easily accommodates multiple events, and 2024/25 made the most of this.

The Bill Hunter Legacy, which we were so fortunate to receive at the very end of the previous year, gave us the confidence to start planning longer-term with more certainty than had previously been possible. This has meant strengthening the existing team to create the basis for future expansion and increased charitable impact, and to accommodate the request of a long-standing staff member to reduce his hours. We also initiated a board recruitment process to bring in important new skills as we develop our plan, successfully resulting in the appointment of 5 new experienced trustees in June 2025.

Mindful of the need to use the legacy wisely to enhance our long term future, we nevertheless felt that it was important to use some of the interest earned on the invested fund from the Legacy in the shorter term, to expand our education programme, offer free activities for families and to contribute to a project setting up a young people's heritage research collective (LYRIC) to secure a grant from Camden Council. An environmental report also gave us the data and groundwork for future funding applications for improvements to the building.

Partnerships and relationships with organisations, funders and individual artists have been key throughout the year to expanding the programme and the range of people with whom we work. East London Shakespeare Company brought *Much Ado About Nothing* to the Tea lawn and artist Alison Lam, with whom we have been working since 2020 when she helped develop our *Cabinet of Curiosities* schools project, brought her own *Mind the Gap* arts project exploring neurodivergent overwhelm.



We have always believed that supporting artists helps them develop their careers but taking part in a 'Most Significant Change' study through the national organisation Future Arts Centres has confirmed this really is the case. *'it really elevated my professional practice and how I was seen in the local community. It did open a lot more doors, so from an artist's point of view it was super empowering and it builds your confidence.'* Alison Lam on developing *Cabinet of Curiosities*.

Financial Review:

2024/25 has been a very good year financially compared to 2023/24 with increased income from hires and related catering income (£380k compared to £319k), as well as increased ticket sales (£71k compared to £58k). Once the £1,975k Bill Hunter Legacy received at the end of the last financial year is taken out of account, the 'like for like' income for 2024/25 is £636,813, compared to £545,992 in 2023/24. In addition, we received a further £129,762 interest income on our reserve funds, which include the Bill Hunter Legacy, compared to £19,755 the previous year.

The vast majority comprises social hire income and the related catering income. This type of income fluctuates year on year according to external factors, but the impact of covid and the cost of living crisis has exacerbated this and the surplus in 2024/25 will be important in compensating for what we anticipate will be a drop in 2025/26. On an encouraging note, advance bookings as of December 2025 indicate an increase for this type of income in 2026/27 compared to 2025/26. We continue to monitor our bookings and our promotion to mitigate the trends.

The continuing support of John Lyon's Charity for our secondary school programme is significant, and has been awarded for another 2 years. These projects align with school terms, as opposed to financial years, resulting in what appears to be a high level of restricted funds/unspent grants carried forward. However, these funds are allocated and will be spent in the earlier part of 2025/26 when the school year completes.

Costs in 2024/25 increased compared to the previous year, the majority comprising salaries which reflected a combination of a staffing and salary review and increased creative and heritage programme. As referenced above the review was a response to increasing levels of hire and creative/heritage programme activity in the House together with a request by one staff member to reduce hours. This represents an investment in our ability to generate income longer term and ensure the highest quality delivery. The staffing differential between the years also reflects significant salary saving in 2023/24 when some posts were vacant during recruitment.

There was a slight increase on repair and maintenance costs. This is an area which will start to increase as it is now 9 years since our major refurbishment, and has been taken into account in future planning.

Review of Activities:

The Building

Lauderdale House is a rare example of a Tudor merchant's 'country' house, built in 1582 by Sir Richard Martin, Master of the Mint, and his wife Dorcas who discreetly published pamphlets contrary to the religious views of Queen Elizabeth I. Since then it has a wide range of visitors and residents who have created a unique combination of heritage features spanning centuries and a multitude of stories – King Charles II visiting actress Nell Gwynn; the trial of the Quakers Meade and Penn which established the independence of the jury and habeas corpus; chickens and shoes secretly hidden behind the chimney to bring good luck; Florence Nightingale's advising on the establishment of a convalescent home here for St Bartholomew's Hospital; Victorian archaeological parties; the gift by Sir Sydney Waterlow Lord Mayor of London of the house and park 'as a garden for the gardenless'; and the dog who saved the house and resident parkkeepers from the 1963 fire.



Each year Lauderdale House Society adds to that history. Established by local people in 1978 when it took responsibility for the House, it has, over the years, repaired, refurbished and brought different parts of the building into use for the community. This process came near to completion with a significant 2016/17 refurbishment which upgraded all of our facilities, immeasurably improved circulation to allow multiple use of different spaces, enhanced and preserved the heritage, replaced a worn out 1960's building, and introduced major improvements in terms of accessibility and environmental impact.

Lauderdale House Society leases the building from Camden Council, which 'owns' it as charity trustee under an 1889 indenture and we currently occupy the building on the basis of a lease agreement which was a condition of the National Lottery Heritage Fund grant of £1.2million at the time of the 2016/17 refurbishment. We continue to work in partnership with the Council in relation to ongoing repair and maintenance and major works.

As usual we have worked hard in 2024/25 to maintain high standards of decoration and repair and are proud of the House's condition, especially in the light of an annual footfall of 75,000 people. Over the next couple of years our focus for the building will be on the following areas:

- Having commissioned a condition survey of the **17th century trompe l'oeil of balustrades** hidden behind panelling on the main staircase, we are exploring ways of safely preserving it for the future whilst enabling more people to enjoy it.



- We are also looking at how to make the building more environmentally sustainable whilst respecting the heritage and commissioned a study to use as a basis for fundraising and planning.
- Important and necessary improvements to the cellar and full external redecoration will also be built into the programme of works.

Heritage and History

In addition to looking after the house itself, we use the arts to tell our heritage stories and weave references to our history into our programme whenever possible using creativity to make it relevant – our secondary school arts projects are inspired by former residents, audiences are given historical facts and invited to explore the building at lunchtime concerts and jazz, and the free family craft workshops have a heritage flavour.

LYRIC, the Lauderdale Youth Research & Interpretation Collective

This is the most recently significant addition to the heritage programme. It is a new initiative made possible by Camden Council's Cultural and Education Support Fund, offering eight 16 to 17 year olds the chance to meet weekly after school with support of a history facilitator, a trip to an archive and guest speakers, to learn about research and archive methods. Each chose an aspect of local history to explore and were rightly proud of their exhibition in our Courtyard Gallery.

They also created individual podcasts discussing their projects and how much they had learnt and also ran a stall at the Local Heritage Weekend, re-exhibiting their interpretation panels in the Entrance Hall.



'I was impressed with how they all explained and advocated to people that showed interest.' Jonathan Goddard facilitator. A member of the public said, *'What a wonderful exhibition. I have really enjoyed learning so much of the history of the area. The youth works were particularly impressive.'*

Local Heritage Weekend

This event has been a flagship fixture since 2017, growing each year. It comprises a morning Forum for networking, and an afternoon fair bringing together at least 20 history societies, heritage buildings, schools, new projects and other relevant organisations, including, for the first time this year, the Murugan Temple and young people from LYRIC.



The free talks gave new and potential refurbishments the chance to share experiences – Highgate

Cemetery, Acland Burghley Brutalist Museum and Highgate Library - and audiences the opportunity also to explore the recent history of the Holly Lodge and Whittington estates' 'White Flats' and included films by local filmmakers. *'Thank you so much for inviting us, and for arranging everything so well. The link up with the White Flats was a very good idea. Altogether, a very successful and enjoyable event.'* Roger Elliott, Chair Holly Lodge Community Centre.

Communities

Lauderdale House strives to connect with as wide a range as possible of the people who live, study, visit and work in the area. This, like many in London, is an area of contrasts, with the more affluent Highgate profile to the north, and communities south of the park, around Archway and towards Camden, many of whom are in areas of high deprivation. Sandwiched between these areas of high deprivation and other more affluent communities we are very well placed to bring people together.

But, we are also very aware that the notion of an arts and education centre based in a historic house can in itself create barriers for many people. Therefore, over the years, we have sought to break these down through developing ongoing projects which engage and resonate with particular groups, through collaborating with local organisations and through bringing together people and organisations to share experience and creativity. Using creativity to explore local heritage and cultures and give a voice to more marginalised groups is an important part of our role. This is a long-term process and relies on building relationships over time.

Our schools programme and youth collective engage young people; older people, many of whom are isolated, attend lunchtime concerts, the gallery, talks and cafe; and free activities seek to offer the chance for families to have fun together without worrying about cost.

Our aim is always to widen the range of people who enjoy the House but at the same time ensure new initiatives are sustainable and can be built into our annual programme for years to come.

Nowruz, Persian New Year, Cultural Festival

A recent example is the Nowruz, Persian New Year, Cultural Festival which ran for the second time in 2025, and is now a permanent feature. Waterlow Park, and as we have discovered, Lauderdale House, are regularly visited by the many cultures who celebrate Nowruz - Iranians, Afghans, Kurds, Uzbeks - especially at Nowruz when families traditionally gather outside to celebrate and are drawn to the park which reminds them of a Persian garden. The festival seeks to encourage the wider community to enjoy this rich cultural heritage and at the same time offer Persians a 'home' to celebrate a major event in their calendar.

'Lauderdale House itself is a lovely historic venue, perfect for community events like this. The gardens added to the charm, making it a great place to enjoy the arrival of spring. I really appreciated the effort put into showcasing Persian traditions while also making it an inclusive experience for everyone.'



Over a 2 week period we hosted stunning art exhibitions featuring 7 artists, poetry, jazz and storytelling nights, family crafts, a bazaar, talks on travel, Nowruz, Persian miniatures and 1950's advertising art and welcomed pack houses. Our thanks are due to Iranian artist and curator Mehrdad Aref-adib who worked tirelessly to introduce fascinating artists; and also to the British Institute of Persian Studies and Tilda Rice who sponsored the festival.

'I am absolutely thrilled to take part in your fantastic event [Nowruz Bazaar]. It was a wonderful opportunity to meet new people and get to know everyone last time, and I am really looking forward to this one.' Stallholder in 2024 and 2025



Inclusive Internship

We regularly review the barriers to our accessibility - physical, economic, perception, cognitive and digital - continue to build on our understanding and adaptations. Therefore when John Lyon's Charity invited us to attend 'A New Perspective Inclusive Conference and Showcase' we were excited to learn about their new initiative to fund 12 month internships in arts organisations for young people with disabilities and honoured when invited to apply in March 2025. We have since then been awarded a grant and our intern will be starting in February 2026. This is a natural progression to our work supporting volunteers with illness/disability over the past 20 years and partnerships with Camden Youth Disability and the Harington Scheme.

Networks & Partnerships

Collaboration and sharing are important to us. We have received much support and advice from other organisations in the past and see it as our duty to share experiences and knowledge with others. We are relatively small, but do have more resources than many of the local volunteer led organisations, and supporting them where we can is a tangible demonstration of our local commitment.

- We lead a local **Breakfast Network**, which, every quarter, is attended by 20 to 25 people representing a wide variety of organisations and venues - community centres, arts organisations, churches, food banks and schools - who all appreciate a regular informal in person sharing of information and support. *'I also wanted to say a huge thank you for all you do with the Breakfast Networking Group, it truly keeps local organisations connected, and in such a positive way.'* Sue Shefras, Chief Operating Officer, Harington scheme.



- We are active members of the Waterlow Park Trust Advisory Group, Young Camden Foundation, Camden Spark, Acland Burghley's Hall for All Advisory Committee and CulturED.
- In 2025 we also contributed to the Highgate Cemetery development consultation meetings, Camden Council's Cultural Strategy consultations, and the AGM's of the Dartmouth Park Neighbourhood and C4 Camden Community Centres Consortium. Moreover, our Director is an elected member of the Highgate Neighbourhood Forum.



- Another exciting development was, in October, we offered advice, support and space to site specific director/designer and installation artist **Geraldine Pilgrim's *Memento Mori* project at Highgate Cemetery**. This innovative Arts Council funded Research and Development phase integrated visual and performance imagery in the cemetery with sung voice and live music, performed by local people and professional creatives to explore remembrance, grief, and resolution. It lay the foundations for its expansion to national cemeteries in future years.
- Over the years we have sought to nurture relationships with creatives offering space, opportunities to gain experience and encouragement. In return they come to us with ideas and enliven the galleries. This year, as referred to above, we were delighted to host **Alison Lam's national *Mind the Gap* arts project** engaging young people from our youth collective, Fresh, to work alongside Camden Youth Disability.
- Summer 2024 initiated a new partnership with the East London Shakespeare Company who specialise in fun and accessible interpretations of Shakespeare's work and we hope this will become a regular feature in our calendar.



- As ever, our participation in the Highgate Festival offers an opportunity to support local creatives and we were delighted to host a celebration of Jane Austen in song and music.

Free Programme

It is an important part of our mission to offer a free creative programme designed to maximise access and offer welcoming activities which anyone can attend. Over and above our free outreach and education programme, and 250 free gallery days, we seek to incorporate a consistent offer of activities across the year.

Our 14 free lunchtime concerts performed by our resident pianist, Stephen Hose, and Insieme chamber opera collective, regularly attracted audiences of over 50 with a mix of regulars and new faces. The relaxed atmosphere, wide ranging programme and friendliness of both performers and regular audience make it a special 'oasis' of calm and creativity in the middle of the day for many people. The lift ensures maximum accessibility.

Free family activities are important. Over 300 children enjoyed our Easter Trails in Waterlow Park where the Giant Bunny, Monstrous Flowers and Dancing Bumble Bees attracted many fans and the Persian New Year Haftsin Trail revealed the secrets of the Haftsin Table to over 400 families.



This year we expanded our seasonal family craft sessions into monthly events combining a fun family craft activity with heritage inspiration. Activities included making Persian tiles, fantasy historic houses, exotic masks and puppets.

Participants said "We spent 90 minutes here!

My boy loves history so having the extra information around the room, plus the QR

to discover the history webpage was great' and 'Brilliant, a great selection for all interests, really great selection of crafts and well run, 10/10 would definitely come again'



Secondary School Outreach Programme

Our secondary school programme, introduced in 2016 and reviewed each year, focuses on creating replicable models which run over multiple sessions in school and at the House. These give young people an opportunity to develop a relationship with a practising artist, with Lauderdale House itself and to enhance and improve learning above the usual curriculum offer.

We are therefore delighted that, thanks to another grant from John Lyon's Charity, we were able to offer all three of our projects - 3D visual art project, *the Cabinet of Curiosities*, our poetry project, *the Art of Dispute*, and our immersive drama Tudor project, *Mad, Bad and Dangerous to Know: the Tudors*. Each project ran for 6 weeks and in total we ran 48 creative sessions with 190 young people from 8 different classes across 3 schools; worked with 8 different professional creatives and included a visit to Lauderdale House.

The projects are designed to excite and interest young people, build their confidence and creativity and expand their learning through using multiple teaching methods. They enhance the curriculum and encourage talented pupils to go beyond their usual creative boundaries whilst supporting those who may face more challenges by adapting to how they learn. Anna Au-Yeung, teacher at William Ellis observed how 'Students enjoyed using a range of materials. One student who has SEND [special education needs and disabilities] enjoyed all the workshops so much he kept asking for Olivia and Alison to come back.'

- ***Cabinet of Curiosities*** connects the young people with Waterlow Park, using as its starting point our former resident James Yates, who was a Victorian collector of exotic plants and is appreciated by teachers as "Students had the chance to use different materials which they usually don't use in school and work in a way that is experimental. They really enjoyed this and engaged well.'

The participants in *Cabinet of Curiosity* exhibited their artworks - 85 bronze works, 85 porcelain sculptures, 170 ceramic hanging pieces and 10 printed banners - in our public galleries and outside in the Park during the Highgate Festival. The private view was attended by the Mayor of Camden Samata Khatoon, acknowledging the significance of the project. All the young people attending were very proud of their achievement but none more so than one pupil who had been engaged with the project but very disruptive, as she struggled with the structure of school. Her pride in showing her father her work on public display was very special.



- *The Art of Dispute* is inspired by former resident and Quaker William Meade whose trial with William Penn established the principles of the independence of the jury and habeas corpus. Students are always fired up by discussions around freedoms that are relevant to them, and the poetry books produced by the projects are very enlightening. Bringing nationally recognised poets into the classroom makes an enormous difference: *My favourite part of the project was working with Mr Gee, he really helped with my confidence.* Student at WES. ''

Performing in the Lauderdale House Gallery with stage lights and an audience of fellow class members can be daunting but the poets' support makes it an enjoyable challenge, *'I was unsure of performing but I'm really proud I faced my fear of stage fright and performed.'* Student at LSU At the end each student receives printed collection of the 75 poems produced.



- ***Mad, Bad and Dangerous to Know: the Tudors*** creates cultural capital for young people before



they start to study the Tudors. It's a lively and creative introduction to the Tudor world through drama, dance, beatboxing, spoken word and fashion design, including dressing up in costumes kindly loaned by Cosprop. Our evaluation consistently shows that young people retain far more information by learning in this fun way as opposed to a formal classroom lesson. At the start of the project 76% of the students knew nothing about the Tudors - by the end 72% knew 'a lot'. It also enhances teachers' experience, 'The project

showed me the potential to use art and costume and to show what they tell us about the past - unique ways to explore the past', Christopher Doel, Team lead Politics & History, PH.



By running the projects across multiple sessions and using the history of the house as a catalyst means young people finish the project with a much greater understanding of and familiarity with Lauderdale House. Across all projects, at the start 79% of participants 'knew nothing' about the House but by the end 82% had good or great knowledge.

Other Outreach Projects with Young People

Fresh Youth Collective

An important ongoing part of our outreach since 2018, run in partnership with Camden Youth Services, is the **Fresh Youth Collective**; young people, aged 13 to 19 and largely from the local estates meet here weekly to enjoy and try out different creative activities in a safe space where they can also socialise.



They are a diverse group, and although numbers are relatively small, the young people clearly value it as is demonstrated by the fact they keep returning. We tailor the sessions to the individuals, for the greatest impact, and over the year the programme included sessions with artists, musicians, photographers, and Chinese calligraphers as well as well as a Summer BBQ, Christmas party and visit to find out about the restoration of the Whittington Cat organised by Proud Places which is a London-wide engagement programme inspiring young people with the world around them.

Summer Holiday Programme



We offered an enhanced Summer Holiday programme with the partnership of Camden Summer University and a grant from John Lyon's Charity Holiday Fund giving young people the chance to focus on photographic techniques with the Photography Foundation. Participants were encouraged to submit to the young people's section of the annual Photographic Competition which we introduced last year.

LYRIC, the Lauderdale Youth Research & Interpretation Collective

As discussed in the heritage section we were delighted with the success of our first young people's heritage research project, which explored a wide range of local history chosen by the young people. We have funding to run it again in 2025/26 and longer-term hope to find future funding to make it a cornerstone of our work with young people. It was clearly valued by the 8 participants, who barely missed a session, and we were interested to learn later that one of the pupils was in fact a school refuser.

The project offered valuable skills to take forward, *'Before I found out what archiving was, I thought it was just a thing for professionals and people already in the sector. But now it's opened up new methods of research which is pretty good, and that I'm actually going to need.'* The podcasts are on our website

<https://www.lauderdalehouse.org.uk/learning/lyric>

It is important to us that young people's activities integrate with the wider programme when possible. The exhibition showcasing their work in the Courtyard Gallery are deliberately set in a very public space at the heart of the building. We were delighted we could tie in the Photography projects with the annual Photographic Competition and LYRIC with the heritage weekend.

Primary school visits continue, including one from the Saturday Persian school, and we were pleased to host Museum Takeover Day again when the children took over the house designing social media posts, welcoming people and making exhibits.

Performances

In 2024/25 we hosted 70 performances and talks, most of which were concerts but also included *Pride & Prejudice in Music and Words* for the Highgate Festival and a family friendly production of *Much Ado About Nothing* outside on the Tea lawn, plus talks for the Heritage Weekend and Nowruz.



Jazz

The programme is a mix of external promoters and those events we promote ourselves such as the jazz programme which has been featuring top names for 29 years. Programmed by Deirdre Cartwright and Alison Rayner of Blow the Fuse we aim to celebrate experienced performers such as Carol Grimes, Jim Mullen and Liane Carroll whilst offering showcases to up and coming names such as Emily Masser, Immy Churchill and Alex Clarke who said, 'Thank you so much for having us! We all thoroughly enjoyed it and really appreciate you looking after us so well. A wonderful venue & an enthusiastic, attentive audience - all-round a fabulous night!' Regular audiences have been coming for years but the fact that our allocation of under 35's tickets regularly sellout shows we are attracting a younger crowd as well.



Summer

Despite more rain than in many years our summer outdoor music programme was well received with gypsy jazz from Iranian quartet Latchepen, latin fusion from Rios and King and a magical blend of Hindustani and African songs with flamenco and jazz from John Etheridge and Vimala Rowe. Camden Youth Music returned as part of the Highgate Festival for a very enjoyable afternoon.



Other Music

We hosted over 20 visiting promoters who brought huge diversity – classical and romantic repertoire, musical theatre, folk, Chinese and Indonesian art songs, palm court orchestral, a fusion of modern jazz with North African music, sound baths, Carole King and James Taylor tributes and several concerts featuring the work of contemporary women composers and new opera. Peter Michaels said, *'the concert went very well! It is a beautiful place to perform.'*

Family Performances

For families our site specific Halloween Trail filled the park with witches and ghouls of all shapes and sizes, amusing a total of 400 people across eight performances! Other children's activities included Santa's Grotto, an enthusiastic Christmas singalong outside despite the chilly weather and Barking Dog Theatre's pantomime in January.



Exhibitions

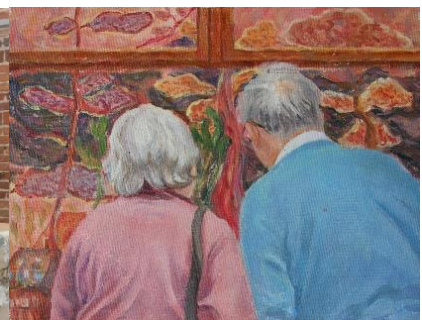
With 25 different exhibitions in our main galleries, of which nine were group shows, three retrospectives, plus six exhibitions of work by community groups and projects in the internal courtyard gallery it is almost impossible to pick out individual shows. When selecting artists we look for a range of media, subject matter and experience, balancing upcoming and recreational artists with those who are more experienced, and with an emphasis on local creatives. Some groups make regular appearances and seeing their progression year on year is always exciting. At the same time we make sure that new artists and groups have an opportunity too.

Highlights included:

- For the first time we welcomed in June the prestigious Reiff Collection of Modern British Art which focuses on 19th and 20th century British artists including many prominent names.
- A special retrospective was by our regular volunteer Gordana Johnson who is also the driving force behind regularly exhibiting photography collective '13'. Curated by the British Croatian Society it showcased her ability to catch special moments, see things differently and an ongoing appetite to experiment and explore.



- 3 exhibitions by different Chinese artists –William Cai exhibiting freestyle brushwork (xieyi) and detailed brushwork (Gungbi), student Xinan Yang's contemporary take on family for the Moon festival and contemporary Lingan paintings by KC Chan, Phillip Chang and Desmond Chung.



- Our annual photographic competition is always popular. It offers local photographers an opportunity to share their work and gallery visitors the chance to enjoy a wide range of styles and subject matter. The private view is always a lively exchange of people's different experience and approaches. For the second year running we ran a youth section which was won by one of our longest attending youth collective members.



The internal Courtyard Gallery is a central thoroughfare through the building and, therefore, an excellent showcase for work. Community exhibitions included Yaran's Women's group for the Nowruz festival, the Fresh Youth collective, Summer Holiday programme, Harington Scheme (young people with learning disabilities), our schools' programme Cabinet of Curiosities exhibition for the Highgate Festival, LYRIC and Mind the Gap encompassing bronzes, zines, paintings and prints, origami, photography and research projects.

Workshops and Classes

This programme comprises classes which are programmed and managed by us alongside those run by external hirers, creating a vibrant and broad offering for everyone, from toddlers to the retired. Most of the classes are arts based and in an average week during the term we host 38 sessions, including our own in-house workshops, totalling 1,272 over the year. The value they offer to the community should not be underestimated in terms of learning and stimulation together with invaluable social interaction.

We pride ourselves on maintaining close supportive relationships with the hirers. Our own watercolour class and life drawing classes continue to be full and the children's drawing and painting classes have a loyal attendance.



Social Events and Hires

During 2024/25 we hosted 152 celebrations (weddings, parties and memorials), 62 meetings, 34 rehearsals and 24 concerts alongside our own programme, classes, rehearsals and other activities.

By hiring the House for special celebrations people build long-term relationships with us and return to enjoy arts activities and the café. This creates a valuable community base and ensures that our galleries remain lively and vibrant.

Many of the parties this year were 70th and 80th birthday parties, plus a scattering of 90ths and 95ths. One of the 70 year olds had got married here 16 years ago and previously celebrated her 50th and 60th birthdays with us. As a dignified space with a warm atmosphere we also provide a special place for memorials and funerals and were honoured to be chosen as the venue to celebrate the life of Kid's Company's Camila Batmanghelidjh whose guests included actress Ruby Wax and Steve Chalke and Sophie Windsor.

The food was great....your staff were lovely, and Sue is totally brilliant. Lots of people commented on how friendly, helpful and nice the staff were. Helen, what a lovely space that gallery is and we were so lucky to have a bit of sunshine. Three of my friends are artists (one has actually exhibited upstairs at the House) and so there was much interest in Hilary Rosen's pictures. A very successful party, thanks again to you both for everything you did to make it possible. Bridget Patterson party February 2025

Thank you so much! We had an incredible day. We live in Highgate and go to Lauderdale House/Waterlow Park every week. It is part of our lives and to have had the experience of getting married there was incredible. Stefan and Odile wedding, September 2024



Thank you so much for making Friday's event so memorable. Lauderdale is just so special and I was so glad that we were able to host our event there. It was lovely and relaxed and the perfect way to celebrate Mum's life. She would have absolutely loved it!
Zahra Akkerhuys, memorial June 2024

Café and Catering

Our catering partner, Pink Food, more than meet the challenge of operating a friendly café which is open every day and, at the same time, delivering top quality catering for the many weddings and parties at the House. This combination reinforces a sense of community whilst bringing in essential income.

Just wanted to say a huge thank you to everyone who helped to make our 25th wedding anniversary celebration such a success last week. We had lots of compliments about the venue and food, especially the canapés. Your team made it easy for us to host the event as you thought of everything and gave us all the guidance we needed to put on a great party.

We all had a fabulous time and the weather didn't spoil it for us. We had some lovely outdoor photos too. Thank you again to everyone at Lauderdale. An evening to remember! Samantha Mann, 25th wedding anniversary.

Fundraising

Although much of our income derives from hires and some from ticket sales, fundraising continues to be vital to allow us to deliver our full potential charitable impact and maximise the impact of the Bill Hunter Legacy. Furthermore the repair and maintenance of a listed building is a heavy responsibility and which will require further longer term fundraising.

At present, our main fundraising concentrates on larger and multi-year grants to support our education programme, and we are extremely grateful for **John Lyon's Charity's** continuing support for our poetry, art and drama secondary school projects. We also appreciate their support and knowledge of the sector and are honoured to have been invited by them to apply to their internship scheme for young people with learning difficulties. We were awarded a grant in 2025/26 and our Gallery and Programme Assistant will start in February 2026.



We also value smaller grants or sponsorships which allow us to offer and develop new projects, many of which become a core part of the programme. Thanks are due to **Riverstone Living** for supporting our free concert series; to the **British Institute of Persian Studies** and **Tilda Rice** who enabled us to expand the Nowruz Cultural Festival; and Camden Council whose grant has allowed us to benefit young people through LYRIC. The annual raffle raises just under £2,000

each year for artists to work with the youth collective, and is an excellent opportunity to raise awareness of this work to local businesses who donate and the people who buy tickets. The local **Coop** funded artists to work with Fresh for a month, and the support **of John Lyon's Charity Holiday Fund** and **Camden Summer University** meant we were able to run new summer holiday schemes.

Staffing

A review of the staffing structure was prompted by a very busy Summer when staff worked extremely well, but were under significant pressure, together with the request by the Operations Manager to reduce his working hours, with a view to eventual retirement in 2 years' time. The aim has been to create the foundation for future growth and expansion, ensure top quality delivery, plan for the eventual retirement of a key member of the team who has been here since 1996 and provide individuals with the opportunity to grow and develop. Everyone has worked incredibly well together to adjust to changes and develop their potential.



The changes have introduced some extra capacity for audience development, outreach and operations and events. Roles will continue to evolve and adapt to the needs of the organisation as it grows and the individuals themselves gain experience. Together they bring a wide range of skills, talents, experience and potential which is essential to ensure the success of our diverse and wide-ranging programme. Support from an invaluable team of freelancers comprising artists, teachers and event stewards offers additional depth and capacity.

This has meant the promotion of Isabelle Wilson to Operations Manager, re-designation of Peter Gallagher's role to Operations Deputy as he reduces working hours to 3 days per week, the promotion of Natasha Smith to Marketing & Audience Development Officer, additional freelance staff to support the youth collective, the designation of Liv Clements's role to Education and Outreach Manager and the employment of Etta Levi-Smythe as Operations and Events Assistant.

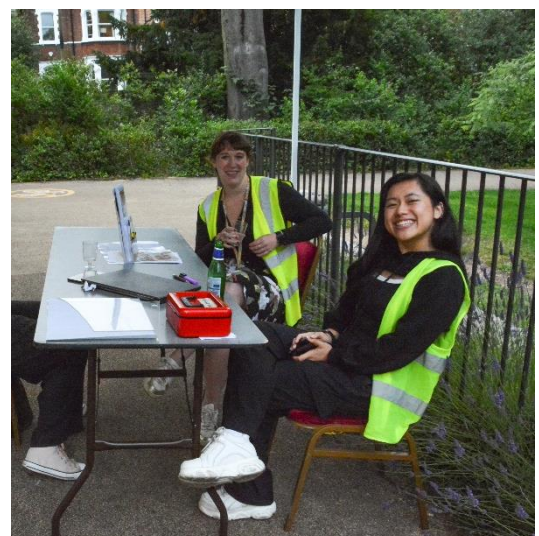
We were sorry early in the year to say goodbye to Nathan Rasdall, Marketing Manager, who moved on to the London Symphony Orchestra, but pleased to welcome Marie Stirling as our new Marketing Manager. Our thanks are also due to Natasha Smith for impressively covering the interim period.

Volunteers

Volunteers are vital, not only for their practical support, but also for keeping the organisation fresh, bringing new ideas and a range of views. Our volunteer team includes retired people, some of whom have been with us for almost 20 years, people wanting to be active following serious illness, school work experience and people seeking to develop their careers. Although they often help out on different days they enjoy each other's company and come together for 'all hands on deck' events such as the Halloween Spooky Walk, Santa's Grotto and our outdoor performances as well as the New Year Party.

We offered 2 weeks of work experience to pupils from local schools. We hosted longer placements for Vivi, a UCL Museums & Galleries Masters student who was writing her MA dissertation on Lauderdale House and how arts spaces create community engagement.

Polly, a Durham history under-graduate who said, 'What struck me most was that I was able to see another side of the heritage sector which I had not considered: the community development and outreach that connects people to history and culture on a personal level. This opportunity has enabled me to experience the variety of jobs in the heritage sector I had never considered, all the while developing important skills for my final year at university and the world of work beyond.'



Risk Management

The Council of Management actively reviews the major risks which the charity faces, and it monitors what controls are in place for its key financial systems, on a regular basis. The Council also reviews the charity's annual provision policy, to ensure reserves provide sufficient resources in the event of adverse conditions. The Council of Management is particularly aware of the impact of the cost of living crisis and high rates of inflation may have on earned income. It also acknowledges that whilst high interest rates bring valuable investment income this is likely to change.

The Council of Management has also examined other operational and business risks faced by the charity and confirms that it has established systems to mitigate the significant risks. Since the pandemic the importance of maintaining a healthy safe environment for visitors and staff has been an even higher priority. All major policies such as Safeguarding, Child Protection and Health & Safety are reviewed annually and approved by the Board.

Reserves & Designated Funds

Our reserve policy is reviewed annually in the light of actual risks, potential costs and guidance from the Charity Commission. The legacy obviously means that at this stage we can cover the vast majority of risks given that at the end of 2024/25 we have £2,695,455 unrestricted reserve, including legacy funds.

In previous years we have designated the funds in the unrestricted reserve between (i) 'building repair' funds and (ii) the 'business reserve' which covers our key risk areas – hire income, ticket sales, café income, unexpected building repairs, support of the outreach and education programme 'in between' grants and cashflow. This also takes into account the 6 months' turnover figure, recommended by the majority of charity and government funders

As a result of the legacy, which we received at the end of 2024/25, we are developing a plan which will use these funds to ensure that in 50 years' time we will still be delivering an extensive arts, education and heritage programme from a well-maintained, well-functioning and sustainable historic house, which is a community heritage asset in itself.

Although the legacy is significant it brings a high level of responsibility and we are aware that it will quickly dissipate without thorough and careful planning.

The key factors we are taking into account are:

- That external fundraising will always be necessary to deliver a vision which sets the organisation up in a strong position in 50 years' time, as the margin between hire and ticket income and the costs of (a) running the programme and (b) ensuring day-to-day running of our historical building, is very tight.

- That it is nearly 10 years since the refurbishment so we will need to increase our Building Repair Fund 1 for 'smaller' repairs and inspection and maintenance which needs to take place every 3 to 5 years. These repairs range from new taps in the toilets to re-sanding floors, and also include provision for electrics, guttering, drainage, ventilation, heating, plumbing etc plus ongoing internal redecoration which is required to maintain competitiveness in the private hire market.
- That we will need to increase the Building Repair Fund 2 which relates to more major repairs as we anticipate the following spending over the next 24 months:
 - External redecoration of the whole house (potentially £250,000)
 - Major works to the cellar to bring it into line with environmental health regulations for use for storage of food, drink and catering equipment which is essential to support and maximise hire income (potentially £150,000)
 - Improving environmental sustainability (potentially £75,000)
- That we need a full review of our Maintenance Plan and the desirable levels of the building repairs funds in the future
- That the advice from the Charity Commission and major funders is that organisations like us should have 6 months' turnover in their 'business' reserve
- That we will invest in a new fundraising post with a realistic timeline and targets which acknowledges the time it takes to build relationships before realising significant rewards.
- That the funds create a bedrock on which the organisation can extend its charitable impact through seeking additional project grants and making the most of new opportunities.

In the light of these factors, and whilst we refine the long-term business plan, the Council of Management has designated the following funds:

- Building Repair Fund 1 - £35,000
- Building Repair Fund 2 - £575,000
- 'Business' Fund - £320,000 ie 6 months anticipated turnover 2025/26
- Legacy Fund - £1,622,761 on deposit in the COIF Charities Deposit Fund managed by the CCLA. An investment sub-committee of board members is reviewing the long-term investment options for the Legacy funds to optimise return whilst keeping the risk profile at moderate levels. In the shorter term, the COIF account is a good option whilst interest levels are high, and regularly reviewed by the committee.

Of the £148,621 restricted reserve funds, £82,000 relates to the final apportionment of the capital element of Lauderdale Transformed referred to in note 12. It also includes funds to support our Secondary schools programme and other project work which will take place in 2025/26.

Going Concern Statement

The Council of Management is able to confirm that the company remains a going concern, able to continue for a minimum of 12 months from the date of signing of these reports, based on the fact that at the time of preparing these accounts:

- The available Reserves cover the company's future commitments and responsibilities
- The business plan is based on reasonable and achievable assumptions taking into account previous experience and the economic climate.

Management Costs

Details of activities are outlined in the Annual Report and the specific support costs are itemised in the accounts. The methods and principles for the allocation and apportionment of costs between categories of expenditure are itemised in the Income and Expenditure.

Financial Reporting

Following receipt of the Bill Hunter Legacy at the end of the last financial year, the Council of Management decided to appoint Warner Wilde Ltd accountants to carry out the 2024/25 independent examination.

A Resolution will be proposed at the forthcoming Annual General Meeting that Warner Wilde Ltd be reappointed as accountants and Independent Examiners to the Charitable Company for the following year.



Statement of the Council of Management's Responsibilities

Company law requires the Council of Management, as directors of the Company, to prepare financial statements for each year, which give a true and fair view of the state of affairs of the Charity at the end of the financial year and of its surplus or deficit for that period. In preparing those financial statements, the Council is required to:

- Select suitable accounting policies and apply them consistently
- Make judgments and estimates that are reasonable and prudent to prepare the financial statements on the going concern basis unless it is inappropriate to presume that the charity will continue to operate

The Council of Management is responsible for keeping proper accounting records which disclose with reasonable accuracy, at any time, the financial position of the charity and which enable them to ensure that the financial statements comply with the Companies Act 2006. They are also responsible for safeguarding the assets of the charity and hence for taking reasonable steps for the prevention of fraud and other irregularities.

The Council of Management considers the Charity Commission's guidance on public benefit, including the guidance 'Public Benefit: Running A Charity (PB2)' when reviewing the aims and objectives of the charity and planning future activities.

Structure

Lauderdale House Society is a registered company limited by guarantee. The directors are the trustees of the company, elected by the members at the Annual General Meeting with one third retiring by rotation (who may stand for re-election) each year. Between Annual General Meetings trustees may be appointed by the existing Board and their appointment ratified by the Members at the next Annual General Meeting. The Board of Trustees is called the Council of Management and usually meets 5 to 6 times per year. During 2024/25 the Council met formally on 7 occasions with email updates and correspondence in the interim to deal with any urgent issues requiring attention in the periods between meetings. The Council takes all the major decisions and reviews and approves all operating policies including finance, safeguarding, GDPR, risk management, health and safety and equality, diversity and inclusion. It employs a Director to run the House and the Director is responsible for hiring and managing other staff, and is accountable to the Council of Management.

The Council of Management has pleasure in submitting its Report and Financial Statements for the year ending 31 March 2025 to the Members of the Lauderdale House Society.

Signed on behalf of the Council of Management



.....
[Anna Haworth \(Dec 19, 2025 10:58:52 GMT\)](#)
Anna Haworth, Trustee

On: 19/12/2025

INDEPENDENT EXAMINER'S REPORT TO THE BOARD OF LAUDERDALE HOUSE SOCIETY

I report to the trustees on my examination of the financial statements of Lauderdale House Society (the charity) for the year ended 31 March 2025.

Responsibilities and basis of report

As the trustees of the charity (and also its directors for the purposes of company law), you are responsible for the preparation of the financial statements in accordance with the requirements of the Companies Act 2006.

Having satisfied myself that the financial statements of the charity are not required to be audited under Part 16 of the Companies Act 2006 and are eligible for independent examination, I report in respect of my examination of the charity's financial statements carried out under section 145 of the Charities Act 2011. In carrying out my examination I have followed the Directions given by the Charity Commission under section 145(5)(b) of the Charities Act 2011.

Independent examiner's statement

Since the charity's gross income exceeded £250,000 your examiner must be a member of a body listed in section 145 of the 2011 Act. I confirm that I am qualified to undertake the examination because I am a member of the Association of Chartered Certified Accountants, which is one of the listed bodies.

I have completed my examination. I confirm that no matters have come to my attention in connection with the examination giving me cause to believe that in any material respect:

1. accounting records were not kept in respect of the charity as required by section 386 of the Companies Act 2006.
2. the financial statements do not accord with those records; or
3. the financial statements do not comply with the accounting requirements of section 396 of the Companies Act 2006 other than any requirement that the financial statements give a true and fair view, which is not a matter considered as part of an independent examination; or
4. the financial statements have not been prepared in accordance with the methods and principles of the Statement of Recommended Practice for accounting and reporting by charities applicable to charities preparing their financial statements in accordance with the Financial Reporting Standard applicable in the UK and Republic of Ireland (FRS 102).

I have no concerns and have come across no other matters in connection with the examination to which attention should be drawn in this report in order to enable a proper understanding of the financial statements to be reached.

FJ Wilde FCCA DChA

For and on behalf of Warner Wilde Ltd

4 Marigold Drive, Bisley, Surrey GU24 9SF



19/12/2025

Lauderdale House Society limited
Statement of Financial Activities
(incorporating an income and expenditure account)

For the year ended 31 March 2025

	Note	Restricted	Unrestricted	Total 24/25	Total 23/24
INCOMING RESOURCES					
Activities in furtherance of the charities' objects					
Art & education	2	44,837	149,557	194,394	2,192,891
Preservation Maintenance Building		0	0	0	0
Recreation, Leisure & Community	2	0	442,419	442,419	347,856
Interest Income	2	0	129,762	129,762	0
Total incoming Resources		44,837	721,738	766,575	2,540,747
RESOURCES EXPENDED					
Charitable expenditure	3				
Art & education		0	296,566	296,566	212,348
Preservation Maintenance Building		0	108,420	108,420	155,385
Recreation, Leisure & Community		0	192,071	192,071	158,178
Governance		0	12,553	12,553	24,336
Total Resources Expended		0	609,610	609,610	550,247
Net Income	4	44,837	112,128	156,965	1,990,500
Transfer between funds	11	-30,566	30,566	0	0
Net movement in funds for the year		14,271	142,694	156,965	1,990,500
Total funds brought forward 1/4/24		134,351	2,552,761	2,687,112	696,612
Total funds carried forward 31/3/25	11	148,622	2,695,455	2,844,077	2,687,112

Balance Sheet as at 31 March 2025

	Note	Restricted	Unrestricted	Total 24/25	Total 23/24
Fixed Assets					
Tangible Fixed Assets	7	0	0	0	0
Current Assets					
Stocks		0	250	250	250
Debtors	8	0	102,225	102,225	108,564
Bank & Cash	9	148,622	2,777,697	2,926,319	2,848,520
		148,622	2,880,172	3,028,794	2,957,334
Liabilities					
Creditors: Amount falling due within					
one year	10	0	184,717	184,717	270,222
Net current assets		148,622	2,695,455	2,844,077	2,687,112
Net Assets		148,622	2,695,455	2,844,077	2,687,112
Funds					
Revaluation reserve		0	0	0	0
Restricted funds	11	148,622	0	148,622	134,351
Unrestricted		0	2,695,455	2,695,455	2,552,761
Total funds		148,622	2,695,455	2,844,077	2,687,112

The financial statements were approved by the Trustees on



[Anna Haworth \(Dec 19, 2025 10:58:52 GMT\)](#)

19/12/2025

Anna Haworth, Trustee

Registered Number 1352278

Charity Number 275502

Statement of Cashflows

	Note	Total 24/25	Total 23/24
Cash flows from all activities			
Cash generated from / (absorbed by) all activities	15	81,040	2,078,843
Net increase / (decrease) in cash and cash equivalent		81,040	2,078,843
Cash and cash equivalents at beginning of period		2,848,520	769,677
Cash and cash equivalents at end of period		2,929,560	2,848,520

Notes to the Financial Statements

1. Accounting Policies

Accounting Convention

The financial statements have been prepared in accordance with the charity's governing document, the Companies Act 2006 and "Accounting and Reporting by Charities: Statement of Recommended Practice applicable to charities preparing their accounts in accordance with the Financial Reporting Standard applicable in the UK and Republic of Ireland (FRS 102) (effective 1 January 2019)". The charity is a Public Benefit Entity as defined by FRS 102.

The financial statements are prepared in sterling, which is the functional currency of the charity. Monetary amounts in these financial statements are rounded to the nearest £. The financial statements have been prepared under the historical cost convention. The principal accounting policies adopted are set out below.

Going concern

At the time of approving the financial statements, the trustees have a reasonable expectation that the charity has adequate resources to continue in operational existence for the foreseeable future. Thus the trustees continue to adopt the going concern basis of accounting in preparing the financial statements.

Charitable funds

Unrestricted funds are available for use at the discretion of the trustees in furtherance of their charitable objectives.

Restricted funds are subject to specific conditions by donors or grantors as to how they may be used. The purposes and uses of the restricted funds are set out in the notes to the financial statements.

Endowment funds are subject to specific conditions by donors that the capital must be maintained by the charity.

Income

Income is recognised when the charity is legally entitled to it after any performance conditions have been met, the amounts can be measured reliably, and it is probable that income will be received. Interest is included when receivable by the charity.

Cash donations are recognised on receipt. Other donations are recognised once the charity has been notified of the donation, unless performance conditions require deferral of the amount.

Legacies are recognised on receipt or otherwise if the charity has been notified of an impending distribution, the amount is known, and receipt is expected. If the amount is not known, the legacy is treated as a contingent asset.

Expenditure

A liability is recognised when either a constructive or legal obligation is identified. Basic financial liabilities are recognised at transaction cost, inclusive of any VAT which cannot be recovered.

Tangible fixed assets

Tangible fixed assets are initially measured at cost and subsequently measured at cost or valuation, net of depreciation and any impairment losses.

Depreciation is recognised so as to write off the cost or valuation of assets less their residual values over their useful lives on the following bases:

- Leasehold Property: 25 years
- Office equipment: 3 years

The gain or loss arising on the disposal of an asset is determined as the difference between the sale proceeds and the carrying value of the asset, and is recognised in the statement of financial activities.

Impairment of fixed assets

At each reporting end date, the charity reviews the carrying amounts of its tangible assets to determine whether there is any indication that those assets have suffered an impairment loss. If any such indication exists, the recoverable amount of the asset is estimated in order to determine the extent of the impairment loss (if any).

Cash and cash equivalents

Cash and cash equivalents include cash in hand, deposits held at call with banks, other short-term liquid investments with original maturities of three months or less, and bank overdrafts. Bank overdrafts are shown within borrowings in current liabilities.

Stocks

Stocks are stated at the lower of cost and net realisable value.

Financial instruments

The charity has elected to apply the provisions of Section 11 'Basic Financial Instruments' and Section 12 'Other Financial Instruments Issues' of FRS 102 to all of its financial instruments.

Financial instruments are recognised in the charity's balance sheet when the charity becomes party to the contractual provisions of the instrument.

Financial assets and liabilities are offset, with the net amounts presented in the financial statements, when there is a legally enforceable right to set off the recognised amounts and there is an intention to settle on a net basis or to realise the asset and settle the liability simultaneously

Basic financial assets

Basic financial assets, which include debtors and cash and bank balances, are initially measured at transaction price including transaction costs and are subsequently carried at amortised cost using the effective interest method unless the arrangement constitutes a financing transaction, where the transaction is measured at the present value of the future receipts discounted at a market rate of interest. Financial assets classified as receivable within one year are not amortised.

Basic financial liabilities

Basic financial liabilities, including creditors and bank loans are initially recognised at transaction price unless the arrangement constitutes a financing transaction, where the debt instrument is measured at the present value of the future payments discounted at a market rate of interest. Financial liabilities classified as payable within one year are not amortised.

Debt instruments are subsequently carried at amortised cost, using the effective interest rate method. Trade creditors are obligations to pay for goods or services that have been acquired in the ordinary course of operations from suppliers. Amounts payable are classified as current liabilities if payment is due within one year or less. If not, they are presented as non-current liabilities. Trade creditors are recognised initially at transaction price and subsequently measured at amortised cost using the effective interest method.

Derecognition of financial liabilities

Financial liabilities are derecognised when the charity's contractual obligations expire or are discharged or cancelled.

Employee benefits

Termination benefits are recognised immediately as an expense when the charity is demonstrably committed to terminate the employment of an employee or to provide termination benefits.

Retirement benefits

Payments to defined contribution retirement benefit schemes are charged as an expense as they fall due.

2. Incoming Resources

	Restricted Projects	Unrestricted	Total 24/25	Total 23/24
INCOMING RESOURCES				
Grants:				
Art Fund (Earth Day)	0	0	0	1,604
FRESH (Camden Summer University)	525	0	525	500
FRESH (Camden Youth Service)	200	0	200	0
FRESH (Arts Society)	250	0	250	250
FRESH (Co-Op)	450	0	450	0
LB Camden (Lyric)	3,312	0	3,312	0
Anonymous	0	0	0	10,000
John Lyon's Charity	40,100	0	40,100	37,300
	44,837	0	44,837	49,654
Arts and Education: Other				
Lettings (concert,exhibitions and arts based classes)	0	66,877	66,877	70,227
Activities (performances, classes and events)	0	76,113	76,113	62,968
Friends & Donations	0	6,567	6,567	2,010,042
	0	149,557	149,557	2,143,237
Recreation, Leisure and Community:				
Hires (excluding concerts, exhibitions, arts based classes)	0	327,016	327,016	261,323
Café & Catering	0	115,403	115,403	86,533
	0	442,419	442,419	347,856
Interest income	0	129,762	129,762	347,856
	44,837	721,738	766,575	2,888,603

3. Resources Expended

	Art	House	Community	Governance	Total 24/25	Total 23/24
Expenditure						
Lettings	19,178	0	47,401	0	66,579	55,088
Activities	63,489	0	0	0	63,489	36,427
Special Costs covered by drawdowns	25,438	0	0	0	25,438	33,836
Staff Costs	145,119	48,505	97,567	11,134	302,324	196,231
Gas & Electricity	0	37,097	0	0	37,097	40,085
Repair & Maintenance	25,915	17,012	24,434	0	67,361	60,366
Stationery & Photocopying	1,848	0	1,848	0	3,695	3,700
Marketing	6,003	0	10,503	0	16,506	12,406
Communications	4,511	0	4,511	0	9,022	8,636
Other Costs	5,066	5,806	5,806	1,419	18,098	54,196
Depreciation & Amortisation	0	0	0	0	0	49,276
Total Resources Expended	296,566	108,420	192,071	12,553	609,610	550,247
Unrestricted	271,128	108,420	192,071	12,553	584,172	431,957
Restricted	25,438	0	0	0	25,438	118,290
	296,566	108,420	192,071	12,553	609,610	550,247

* Amortisation: Note that in 2023/24 an impairment review of the leasehold property asset was carried out.

The value related to a historic revaluation which had created a revaluation reserve. As the lease is not formalised and does not give the occupier the right to dispose of the lease to a third party, it was therefore not considered to have a fair value. The charity has assumed responsibility for day to day maintenance of the building while in occupation and the estimated net present value of the excess of rental income over maintenance expenditure does not support the retention of the revalued carrying value.

4. Net (Outgoing) / Incoming Resources before Gains & Transfers

	2024/25	2023/24
	£	£
This is stated after charging		
Depreciation	0	281
Auditors remuneration	-180	12,000

5. Staff Costs & Numbers

	2024/25	2023/24		
Wages & salaries	259,041	172,946		
Pension costs	7,573	6,535		
Other Costs	10,432	0		
Social security costs	25,277	16,750		
	302,324	196,231		
Average number of persons employed by the Society during the year was 8 (2024: 7)				
There were no employees whose annual remuneration was over £60,000				
Remuneration of Key Management Personnel				
The remuneration of key management personnel was as follows: £56,518.00				
Key management personnel is defined as the proportion of salaries relating to Senior Leadership Team element of any role				

6. Taxation

The charity is exempt from corporation tax as all its income is charitable and is applied for charitable purposes.

7. Tangible Fixed Assets

	Leasehold Property £	Office Equipment £	Total £
<u>Cost or valuation</u>			
At 1 April 2024	0	42,598	42,598
Revaluation	0	0	0
Additions during the year	0	0	0
At 31 March 2025	0	42,598	42,598
<u>Depreciation</u>			
At 1 April 2024	0	42,598	42,598
Charge for Year	0	0	0
At 31 March 2025	0	42,598	42,598
<u>Net Book Value</u>			
At 31 March 2025	0	0	0
At 31 March 2024	0	0	0

All tangible fixed assets are used for charitable purposes. There were no capital commitments contracted for as at 31 March 2025. (2024 - £nil).

8. Debtors

	2024/25	2023/24
Sales Ledger	101,677	107,848
Prepayments	548.09	716
Sundry Debtors	0	0
	102,225	108,564

9. Bank and Cash

	2024/25	2023/24
Lloyds Business Account	46,954	82,482
Lloyds Business Bank Instant Account	138,961	153,585
COIF	2,739,742	2,611,791
Petty cash	662.28	662
Total cash	2,926,319	2,848,520
Restricted	148,622	134,351
Unrestricted	2,777,697	2,714,169
	2,926,319	2,848,520

10. Creditors: amount falling due within one year

		2024/25	2023/24
Sales prepayments 24/25	*	128,868	213,098
Purchases & Sundry		41,334	41,633
Accruals		9,423	12,398
NI/PAYE		5,090	3,093
		184,715	270,222
*Sales prepayments are the receipts for lettings paid in the current year for events that fall in the future year.			
Deferred income is included in the financial statements as follows:			
Current liabilities		128,868	213,098
Movements in the year:			
Deferred income at 01/04/24		213,098	125,832
Released from previous periods		-375,059	-118,687
Resources deferred in the year		297,156	205,953
Deferred income at 29/03/2025		135,195	213,098

11. Restricted Funds

	Unspent Grants 01/04/2024	Incoming Resources	Outgoing Resources	Closing Position 31/03/2025
Restricted Funds				
Grants For Projects Other Than Lauderdale Transformed and Fresh				
John Lyon's Charity (Artists Added Value (22/24))	12,574	40,100	25,158	27,516
Sigrid Rausing	1,449	0	0	1,449
DCMS Cultural Recovery Fund	9,789	0	0	9,789
Arts Council Garden for the Gardenless	5,177	0	400	4,777
LB Camden (Lyric)	0	3312	1,900	1,412
Anonymous	20,000	0	0	20,000
Subtotal	48,989	43,412	27,458	64,943
Grants For Fresh				
Micellaneous	1,582	0	3,109	-1,527
Lady Gould (Fresh)	780	0		780
Co-Op	0	450		450
Camden Council Summer University	0	525		525
Arts Society Hampstead Heath	500	250		750
Camden Council Youth Service	500	200		700
Subtotal	3,362	1,425	3,109	1,678
Grants For Lauderdale Transformed (Capital/Education))				
City Bridge Trust	50,000	0	0	50,000
LT Restricted	30,750	0	0	30,750
Chapman Charitable Trust (Induction Loop)	1,000	0	0	1,000
Company of Art Scholars	250	0	0	250
Subtotal	82,000	0	0	82,000
GRAND TOTAL RESTRICTED	134,351	44,837	30,566	148,622

The restricted funds / unspent grants comprise:

- £82,000 held for Camden Council under the Lauderdale Transformed project
- £1,678 for Fresh youth collective for projects in 2025/26
- £64,943 for projects planned in 2025/26, a large proportion of which relate to our secondary school programmes which follow school terms and are therefore out of alignment with the financial years

Total drawdowns of £30,566 in this year exceed expenditure of £25,438 in Note 3 as £6,129 expenditure in 23/24 was not drawn down 23/24

Details:

Lauderdale Transformed - A major combined capital and outreach programme which has been funded by a combination of grants from charitable trusts, the Heritage Lottery Fund, Camden Council, events and individual giving. It ran as a partnership between Lauderdale House Society and Camden Council. Grants from charitable trusts and donations from individuals were paid directly to Lauderdale House and are detailed above.

Lauderdale House paid the costs of the outreach programme, some small internal improvements, heritage interpretation and also the costs of keeping the organisation going during the closure of the building. Camden Council received the funds directly from the Lottery Heritage Fund as the building contract was placed with Camden Council which paid those costs. Lauderdale House Society occupies the building on the basis of a lease agreement which was a condition of the National Lottery Heritage Fund grant of £1.2million at the time of the 2016/17 refurbishment and works in partnership with the Council in relation to ongoing repair and maintenance and major works. Respective responsibilities are being reviewed and when complete a final apportionment will be agreed.

Fresh - Funding for Fresh Youth Collective practitioners and refreshments.

John Lyon's Charity - Artists Added Value, for secondary school projects (art, poetry, drama/heritage).

Sigrid Rausing - secondary school poetry project

DCMS Cultural Recovery Fund - reserve funds for schools programme

Arts Council Garden for the Gardenless - Funding for arts activities in the park.

LB Camden (LYRIC) - Lauderdale Youth Research and Interpretation Collective practitioner fees and refreshments for young people

Anonymous - education programme funding.

Revaluation Reserve - see Note 8

12. Analysis of net assets between funds

	Unrestricted	Restricted	Total
At 31 March 2025			
Tangible assets	0	0	0
Current assets / (liabilities)	2,695,455	148,622	2,844,077
	2,695,455	148,622	2,844,077
At 29 March 2024			
Tangible assets	0	0	0
Current assets / (liabilities)	2,552,761	134,351	2,687,112
	2,552,761	134,351	2,687,112

13. Related Party Transactions

There were no disclosable related party transactions during the year.

14. Trustees

None of the council of management members received any emoluments or reimbursement for their expenses during the year (2024 - £nil).

15. Cash generated

		Total 24/25	Total 23/24
Surplus for the year	*	109,768	1,990,500
Adjustments for:			
Depreciation and impairment of tangible fixed assets		0	49,276
Movements in working capital:			
Decrease / (increase) in debtors		6,339	-28,436
increase in creditors		-85,505	67,503
Cash generated from / (absorbed by) operations		30,602	2,078,843
* includes interest			