

A full-page photograph of a wedding scene. A bride in a white off-the-shoulder gown and veil, holding a bouquet of red and white flowers, walks hand-in-hand with a groom in a grey suit and light blue shirt. They are walking down a path lined with guests who are throwing pink and white confetti. The background shows a white building with large windows and trees. A dark red banner is overlaid at the top.

Weddings

at Lauderdale House

Lauderdale House

“Just wanted to say thanks so much for an amazing ceremony on Saturday... we really had the perfect day”

ILAN & ELEANOR

Welcome to Lauderdale House

Dating back to 1582, Lauderdale House is an impressive Grade II* listed building known for its vibrant gardens and stunning views in Highgate, North London.

Rich in history and culture, Lauderdale House counts actress Nell Gwynn, King Charles II and diarist Samuel Pepys among its distinguished visitors. The venue is licensed for marriages and civil partnerships, and our beautiful galleries can host ceremonies and receptions.

The perfect place to exchange your vows, Lauderdale offers a tranquil atmosphere while still easily accessible with public transport. Our friendly and experienced Events team will be available from your first enquiry to help you plan your celebration of love in this stunning country house in the city.

Lauderdale House is a registered charity and runs as an arts centre for our local community. The funds raised from weddings go to support our education, outreach and heritage projects.

Contact our Events team to arrange a tour of the spaces and to discuss your requirements on 020 8348 8716 or enquiries@lauderdale.org.uk.

“The venue was beautiful, the food delicious and [everyone] was always incredibly helpful. We both had such a lovely day that we'll cherish for the rest of our lives!”

STEPHEN & MASARAT





Our tale

begins in 1582

The original House was built in 1582 for Sir Richard Martin – Master of the Mint and three times Lord Mayor of London - and his wife, Dorcas Martin. Over the next 60 years, it was lived in by various individuals until it was bequeathed to Lady Anne Home, wife of the Scottish Royalist John Maitland, the 1st Duke and 2nd Earl of Lauderdale, from whom we get our name.

During the Civil War and Restoration years, the House was passed between Royalist and Parliamentary supporters until it was eventually returned to Lady Anne Home. The Earl of Lauderdale was a key advisor to King Charles II, whose mistress, the renowned actress Nell Gwynn, lived here for a short time with their infant son, the Duke of St. Albans.

Lauderdale's last private owner was Sir Sidney Waterlow, another Lord Mayor of London, and he leased it for a time to St Bartholomew's Hospital as a convalescent home. By 1889 the House lay empty, so Sir Sidney gave the House and grounds to London County Council 'for the enjoyment of Londoners'. The 29 acres of land became a public park, and the House was restored in 1893 to serve as a park tearoom and park-keepers' flats. Sadly, during the course of further renovation in 1963, a fire broke out, destroying the roof and much of the interior of the House.

After lying derelict for 15 years, the local community established Lauderdale House Society, the charity which now runs the House. In 1978, after much fundraising and lobbying, the ground floor of the House was opened as an arts and education centre by Yehudi Menuhin, widely acknowledged as one of the finest violinists of the 20th century.

Today, Lauderdale House is a vibrant hub at the centre of the community, with artistic opportunities for young people, an art gallery with exhibitions for both local and celebrated artists, and a concert hall featuring everything from free classical lunchtime concerts to world-renowned jazz. By choosing to hold your wedding at Lauderdale House, you are directly helping the people and communities who benefit from these services.





Lower Gallery & Entrance Hall

The Lower Gallery & Entrance Hall is a flexible ground floor space which can be set up as two separate function rooms or enjoyed as one large reception space. Boasting original Tudor features and Georgian columns, this area opens out onto the Park through beautiful French windows along the picturesque side terrace.

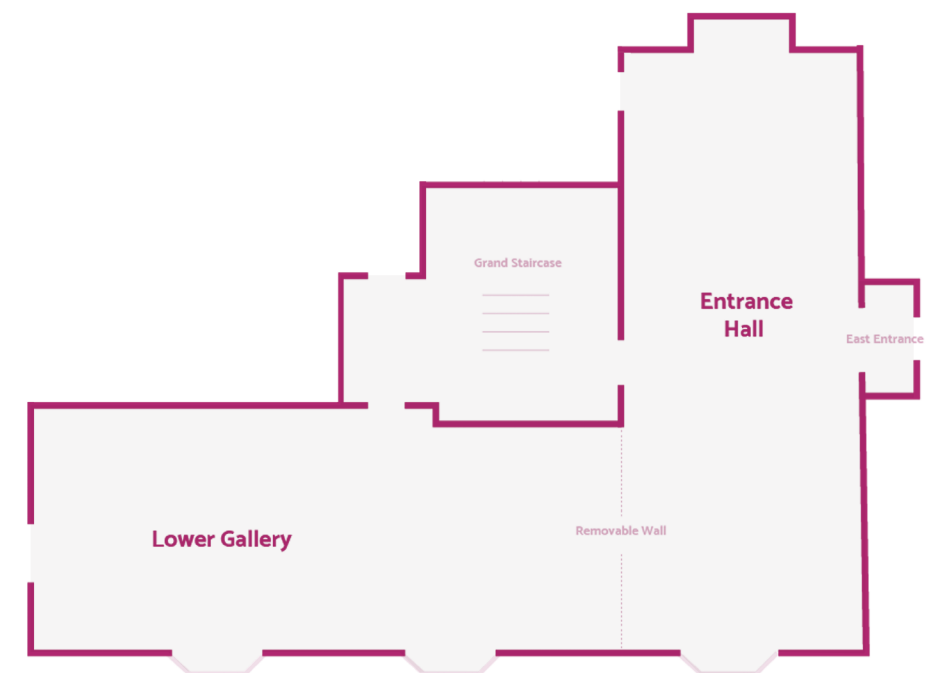
Capacities

Ceremony (Entrance Hall): 100

Formal seated meal: 80

Standing champagne reception: 130 (210 when combined with the Conservatory & Courtyard)

Please be aware that the capacities stated can be affected by the set-up and configuration requested for each function. When planning your event, please discuss your requirements with our team and we can advise you which layout would be the best for you.



Long Gallery

The Long Gallery is on the first floor with stunning views over the Tea Lawn and gardens. The period windows, Tudor fireplace, Erard grand piano and 18th-century ceiling panel create a truly charming space full of character and atmosphere. A lift ensures this first floor room is accessible to guests.

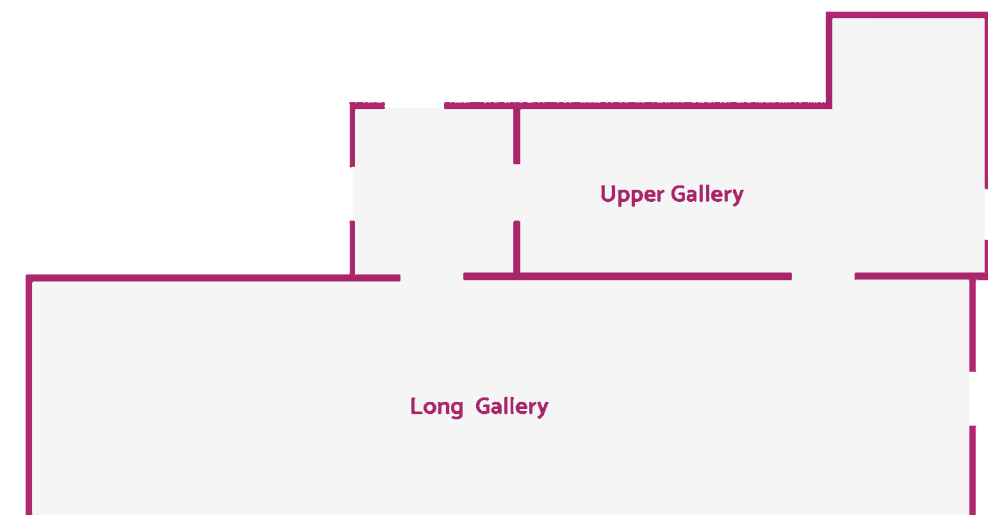
Capacities

Ceremony: 120

Formal seated meal: 120

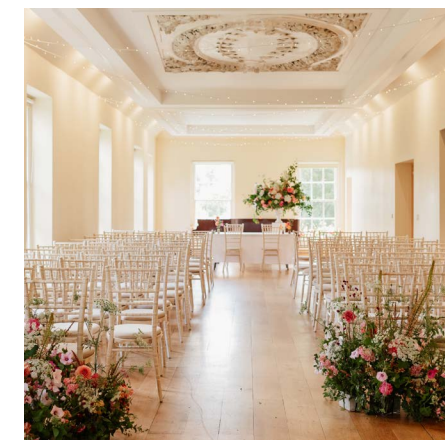
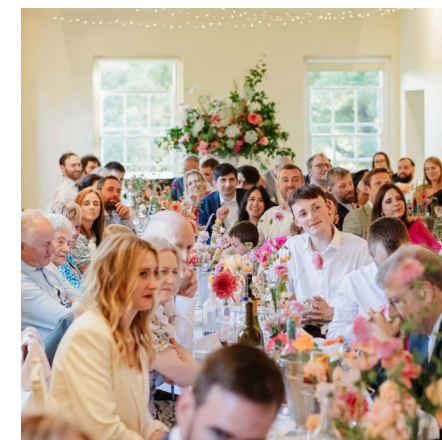
Standing champagne reception: 110

Please be aware that the capacities stated can be affected by the set-up and configuration requested for each function. When planning your event, please discuss your requirements with our team and we can advise you which layout would be the best for you.



“ We couldn’t have been happier with how the day went. We would definitely recommend Lauderdale House, a beautiful venue in north London with fantastic staff! ”

LIZ & STEPHEN



Conservatory & Courtyard

Built on the site of a Victorian conservatory, the Conservatory's brick design complements the Tudor walls of the Tea Lawn and reflects the history of the space. It is a modern, flexible and airy room with lots of natural light from the large glass doors, which provide direct access the Tea Lawn.

The space increases in size when it opens out into the internal Courtyard, which, with its glass ceiling, makes a relaxed area for a buffet, canapés and drinks. It also has the potential to be used alongside the Lower Gallery & Entrance Hall to accommodate more guests.

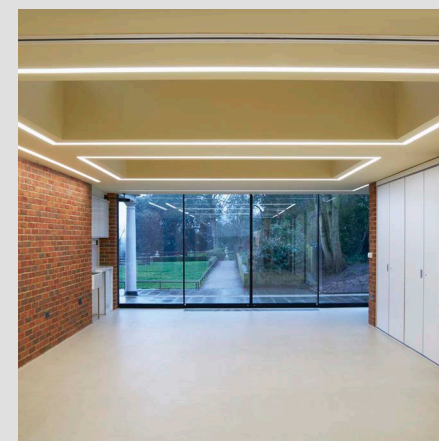
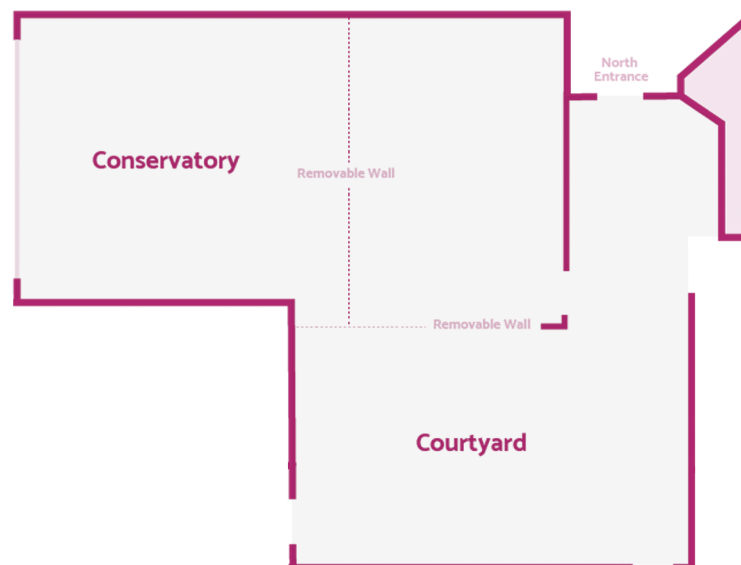
Capacities

Ceremony: 60

Formal seated meal: 50

Standing champagne reception: 60

Please be aware that the capacities stated can be affected by the set-up and configuration requested for each function. Depending on your requirements, we can open up the courtyard for more space for an additional fee. Please speak to a member of our events team for a bespoke quote.





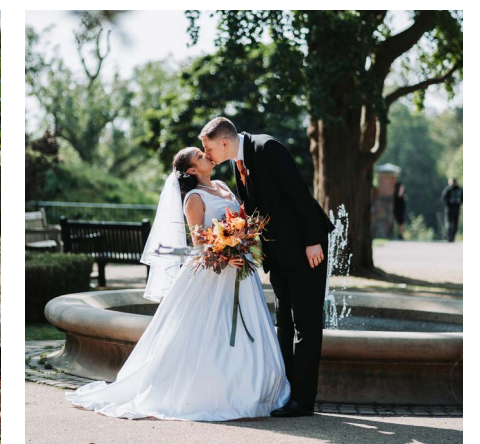
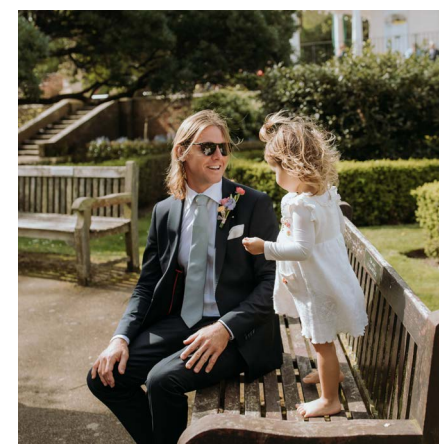
“ A huge thank you to each and every one of you for making our day magical and exactly as we’d hoped! ”

CAROL & PANOS

Waterlow Park

Waterlow Park was once the private estate of Sir Sydney Waterlow. In 1889, he generously presented the land to London County Council, designating the area as ‘a garden for the gardenless’. It was renovated in 2005 and is now a popular scenic space enjoyed by all. With beautiful historic features and a variety of plants and trees, it provides the perfect backdrop for wedding photos.

You and your guests are welcome to go anywhere in the Park during its usual opening hours, which are from early morning until dusk. After dusk, when the Park is closed, you and your guests will have exclusive use of the side terrace by the French windows and the Tea Lawn at the back of the House.





Hire costs

We know that every couple is unique, and we believe your wedding day should be about what works for you. That’s why we hire our galleries by the hour, from the beginning of set up until the last guest has left, so you can have your event for as long as you want. We have made our costs as transparent as we can to make organising your wedding as easy as possible, instead of spending time deciphering tricky pricing.

Generally, it takes between 1 hour and 2.5 hours to set up the space(s), depending on the scale of the function and decorations. To ensure everyone has the chance to finish their food and drinks and say their goodbyes, we have a 30-minute ‘wind down’ before the end of every booking, which is when the music and food/drink service will stop. At least two stewards are required for all events. The role of the steward is to assist with the delivery of an enjoyable, safe and secure experience for you and your guests.

Please find a breakdown of our prices below; on the following pages, you will find some examples of popular wedding packages and timetables.

Hire Charges by the hour:

Receptions:	2026	2027	2028
Lower Gallery/Entrance OR Long Gallery	£385	£395	£405
Conservatory	£220	£225	£230
Two room rate	£540	£555	£570
<i>(Lower Gallery/Entrance Hall with either the Long Gallery OR the Conservatory)</i>			
Ceremonies:			
Lower Gallery/Entrance OR Long Gallery <small>2 hour minimum hire period</small>	£415	£425	£435
Conservatory	£255	£260	£265
Additional costs (flat fees):			
Event steward (per steward)	£120	£125	£130
Professional Cleaning	£195	£200	£205

Ceremony & Reception

example package

Celebrate your big day in sumptuous style with this extensive wedding package including both ceremony and reception.

Room: Lower Gallery/Entrance Hall (ground floor) & Long Gallery (first floor)

Maximum number of guests: 120

1 pm	Set-up begins
3 pm	Guests arrive and take seats for ceremony in the Long Gallery
3.30 pm	Ceremony begins
4 pm	Photos in the Park / drinks and canapés are served in the Lower Gallery
5.30 pm	Guests take seats in Long Gallery for meal
7.30 pm	Drinks and dancing begin downstairs in the Lower Gallery/Entrance Hall
11.30 pm	Drinks/music end & guests begin to depart
Midnight	Last guests depart

This wedding package includes:

- Exclusive use of Lower Gallery/Entrance Hall & Long Gallery
- Use of in-house banqueting chairs & tables set up in your chosen layout
- Two stewards on site from beginning to end to ensure all runs smoothly
- Use of our beautiful Steinway & Erard grand pianos
- Direct access to outside public park spaces, including exclusive use of the Tea Lawn after the Park closes to the public
- Cleaning of the space after your departure

VENUE HIRE COST: £6,375* (excludes catering fees)

These suggested packages are intended to be used as a guide to give you an idea of the kind of options we can offer. Once we have had a chance to speak with you, we can put together bespoke recommendations based on your specific needs and guest numbers.

*Example venue hire cost calculated on 2026 hire rate of £540 per hour, plus additional costs for required cleaning and staffing

Ceremony

example package

Host your ceremony at Lauderdale House – with a chance to make use of the beautiful Waterlow Park as a backdrop for your wedding photos – before departing for your reception elsewhere.

Room: Lower Gallery/Entrance Hall (ground floor)

Maximum number of guests: 100

11 am	Set-up begins
12 pm	Guests arrive and take seats for Ceremony in Entrance Hall
12.30 pm	Ceremony begins
1 pm	Ceremony ends
1 pm	Photos in the Park / drinks and canapés are served in the Lower Gallery
2 pm	Drinks and canapés end, guests begin to depart
2.30 pm	Last guests depart

This wedding package includes:

- Exclusive use of the Lower Gallery/Entrance Hall
- Use of in-house banqueting chairs & tables set up in your chosen layout
- Two stewards on site from beginning to end to ensure all runs smoothly
- Use of our beautiful Steinway grand piano
- Direct access to outside public park spaces
- Cleaning of the space after your departure

VENUE HIRE COST: £1,887.50* (excludes catering fees)

These suggested packages are intended to be used as a guide to give you an idea of the kind of options we can offer. Once we have had a chance to speak with you, we can put together bespoke recommendations based on your specific needs and guest numbers.

*Example venue hire cost calculated on 2026 hire rate of £415 per hour, plus additional costs for required cleaning and staffing

Reception

example package

Join us straight from your wedding ceremony for a sophisticated reception with a sit-down meal in our beautiful historic Lower Gallery followed by dancing into the night!

Room: Lower Gallery/Entrance Hall (ground floor)

Maximum number of guests: 80

2 pm	Set-up begins
3.30 pm	Guests arrive for welcome drinks in Entrance Hall
4 pm	Guests take seats in Lower Gallery for meal
6.30 pm	Meal ends/drinks & dancing begins
11.30 pm	Drinks /music ends and guests begin to depart
Midnight	Last guests depart

This wedding package includes:

- Exclusive use of the Lower Gallery/Entrance Hall
- Use of in-house banqueting chairs & tables set up in your chosen layout
- Two stewards on site from beginning to end to ensure all runs smoothly
- Use of our beautiful Steinway Grand piano
- Direct access to outside public park spaces, including exclusive use of the Tea Lawn after the Park closes to the public
- Cleaning of the space after your departure

VENUE HIRE COST: £4,285* (excludes catering fees)

These suggested packages are intended to be used as a guide to give you an idea of the kind of options we can offer. Once we have had a chance to speak with you, we can put together bespoke recommendations based on your specific needs and guest numbers.

*Example venue hire cost calculated on 2026 hire rate of £385 per hour, plus additional costs for required cleaning and staffing

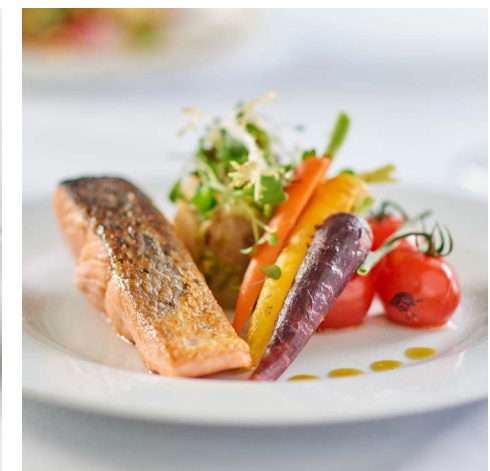


Food & Drink

Our catering partners, Pink Food, have a fantastic range of options to suit your vision and budget. From champagne and canapés receptions to plated meals, Pink's menus feature the highest-quality local ingredients and offer options for all dietary requirements.

Pink Food have worked with us since 2016, and their vast experience will help enhance your day. For Pink Food, it is all about great ingredients, cooked simply and stunningly presented. This approach has brought them to the very top of the industry, with a reputation for quality at every level.

Their team of dedicated chefs and event managers will work with you from the very beginning of your enquiry. To find out more about Pink Food and to begin discussing your catering requirements, please get in touch via kim@pinkfood.co.uk.



“Every dish was exquisite in taste and presentation. Our guests, even those sometimes difficult to please regarding food, were full of praise for the delicious meal and canapés you and your team prepared.”

IRENE & REVANTHA

Frequently Asked Questions

Can I book the outside spaces in the Park?

Lauderdale House is situated in Waterlow Park, which is a public park owned by Camden Council. Like other park users, your guests are free to be anywhere in the park until it closes at dusk. While there is no private use of any areas in the Park during its opening hours, we have been hosting weddings here for over 40 years and have always found other visitors very respectful and happy to give wedding parties plenty of space and privacy. When the Park closes at dusk, you and your guests may continue to use the side terrace by the French windows and the Tea Lawn at the back of the house.

Can I put furniture - such as tables and chairs - in the Park?

There are benches on the terrace which your party are welcome to use. As the Park is open to the public, we cannot have any furniture outside.

Can we use confetti?

You are welcome to use natural flower petals outside – it makes for beautiful photos out on our terrace. We are not able to accommodate confetti (synthetic or biodegradable) in or outside the House.

Can I use an external catering company/bring my own catering?

We do not offer dry hire or invite external caterers. We want your event to run as smoothly as possible, and that means

not having to worry about food hygiene, quality or working around the quirks of our heritage preparation spaces. As such, we have partnered with Pink Food, a talented team who have a fantastic range of options to suit your vision and budget. From champagne and canapé receptions to plated meals, their menus are crafted to ensure only the highest-quality local ingredients are used to offer options for all dietary requirements.

Can you hold a date for me?

We want to make sure that all of your most important guests can come to your wedding, so we are happy to provisionally hold your preferred date for you for up to two weeks without a deposit.

I love the venue and want to get married here – how do I confirm my booking?

Once you have let us know you would like to hold your wedding with us, our Events team will send you an email to confirm the details of your booking. We will then send across an invoice, followed shortly by a secure payment link for 50% of the total hire fee. Your booking is confirmed with us once we receive the deposit. The remaining 50% will be due six weeks prior to your booking. Should you be getting married within six weeks of your booking, we will ask for the entire payment in one instalment.

What happens if I get sick and need to cancel my wedding?

As we are a registered charity, all payments made are non-refundable, so we would highly recommend that all of our couples invest in wedding insurance, just in case.

Who is my point of contact on the day?

Your stewards will be your contacts for the building. For all matters related to catering, Pink Food will designate a 'Manager on Duty' who will coordinate the rest of their on-site team. All staff will be briefed, as we share a system where we maintain notes about your booking, and will be happy to help where they can.

How do I arrange my ceremony with the registrar?

Lauderdale House comes under the Borough of Camden so simply contact the registrar at Camden Town Hall (www.camden.gov.uk / 020 7974 4444) at the earliest opportunity to book registrars to officiate the ceremony. They have all sorts of helpful information about the administrative steps as well as a directory of wonderful Camden-based suppliers.

Can I decorate the venue?

As a Grade II* listed venue, we do not permit anything to be attached to the walls, so it is best to plan your decoration around free-standing or table-top pieces, such as flower arrangements. We do, however, have a series of hooks discretely placed along the ceiling which can be used for bunting or fairy lights. You can also bring battery-powered fairy lights to decorate the railings along the side terrace. No naked flames are permitted in or around the building, but battery-powered LED candles are of course welcome. Our Events team are more than happy to talk through what works well in your chosen

space(s), so please do get in touch if you are in doubt.

Can I have live music or a DJ?

You most certainly can! We have several power points in most rooms that can be used as required, as well as two beautiful grand pianos. We always monitor sound levels in and around the venue to ensure our neighbours are not disturbed, but live bands and DJs with amplification are more than welcome during your booking. Before confirming your entertainment, please let us know what set-up you are planning in advance so that we can work with you to ensure everything goes smoothly.

Do you have any speakers, audio equipment, lighting, projectors etc. that we can borrow?

We have the following kit available for use during your wedding: a projector with HDMI and Mac cables, a projector screen, large floor easels, a lectern, and a small PA with a microphone, which can be used for ceremonies and speeches. Please note our PA is not suitable for evening party music. If you are interested in using any of the above equipment, please let us know as soon as possible. Any other lighting/audio equipment will need to be hired in. Please liaise with the Events team to ensure you have booked sufficient set up time and/or space and to verify that it is suitable for our heritage building before hiring in equipment.

How late can we stay and party?

Our late license is until midnight – this is the time by which the last guests needs to have left the building. To ensure everyone has the chance to finish their drinks and say goodbye, we have a 30-minute 'wind down' period before the end of every booking, meaning the music must end by 11.30pm at the latest.

Can I hire in my own furniture?

If you would prefer not to use our in-house furniture, you are more than welcome to hire furniture in. All we request is that you liaise with us regarding dropping off and collecting as we do not have any storage space for additional furniture.

Do you have recommended suppliers?

Having hosted all sorts of events for over 40 years, we know many local suppliers who we will be happy to recommend. Please contact our Events team for our recommended suppliers list.

Will there be an exhibition in place?

We are a proud arts venue and love celebrating local artists in the house. We have three exhibition spaces which we use to host temporary exhibitions year-round, each lasting four weeks. If you feel the artwork would be an issue, we can arrange to have it removed for your event at an additional cost. We will require at least three weeks' notice to arrange this for you.

Will the café be open during my booking?

The Tea Lawn Café, which is run by our catering partners Pink Food, will remain open from 9am on weekdays, 9.30am on weekends, to early evening, but this will not affect your booking. Members of the public visiting the café will not have any access to your function spaces.

Do you have disabled access?

We are fully accessible for disabled persons. We have a lift to the first floor, and two accessible toilets located on the ground floor. Due to the historical nature of the building we may not be able to accommodate large motorised scooters in the lift. Please let us know in advance if

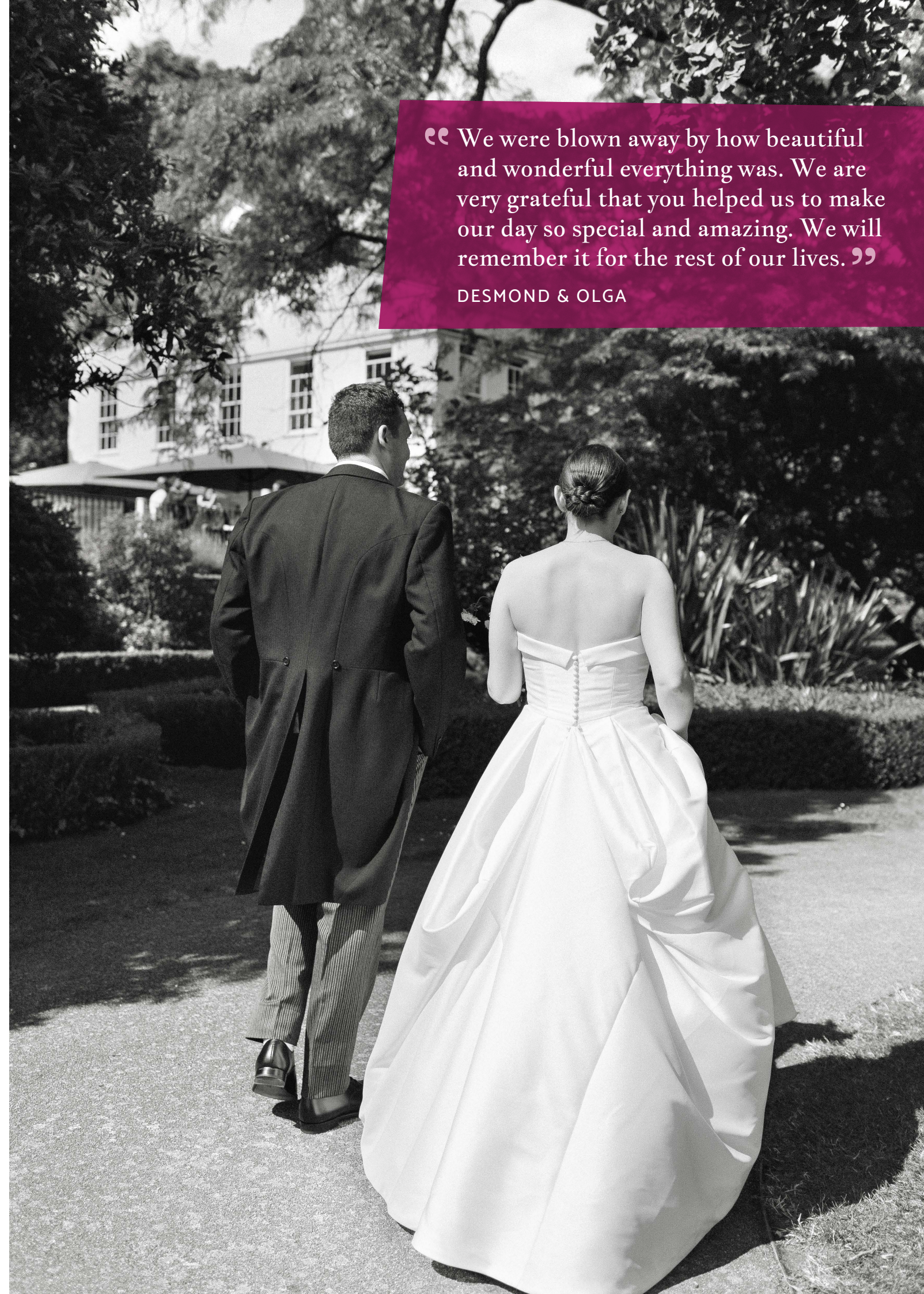
you are expecting any guests with access needs so we can advise on entrances and ensure staff are briefed on the day if required.

Do you have on-site parking?

We do not have any on-site parking. There is one Blue Badge parking spot just in front of the building. Highgate Hill (the road directly outside the house) and several other roads in the immediate area have on-street parking which is free all day on Saturdays and Sundays and from midday on weekdays. Pay and display is in operation outside of these times in some of the areas. Please always check signage before you park your vehicle.

“ We were blown away by how beautiful and wonderful everything was. We are very grateful that you helped us to make our day so special and amazing. We will remember it for the rest of our lives. ”

DESMOND & OLGA

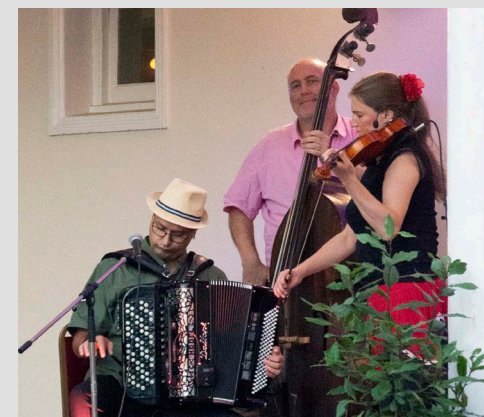




A home for creativity

Today, Lauderdale House serves as a creative and serene space that welcomes and inspires. Alongside our charming café hosting daily regulars and guests of the Park, we operate as a vibrant community hub with artistic opportunities for young people, an art gallery with exhibitions for both local and celebrated artists, and a concert hall featuring everything from free classical lunchtime concerts to world-renowned jazz. In addition, we are a unique and flexible events space for all kinds of events, from children's parties to milestone birthdays and weddings.

By choosing to hold your wedding at Lauderdale House, you are directly helping the people and communities who benefit from these services. As a registered charity without regular funding, we rely on our event bookings to keep our artistic programme varied and exciting for the local community. All income from bookings keeps our 450 year old building alive, whilst also providing valuable funding for our youth group, Highgate Haven, and artistic opportunities for local schools and organisations.

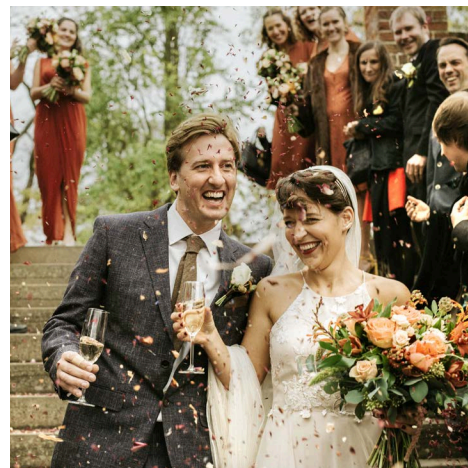
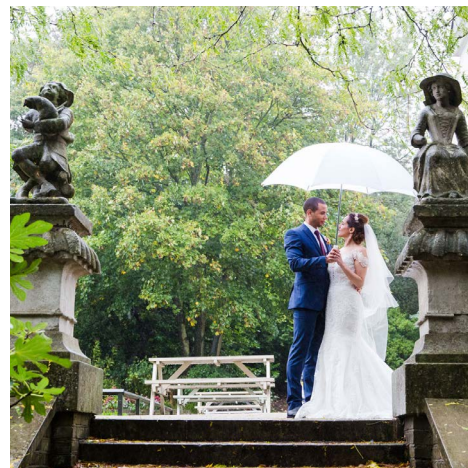


A house for all seasons

We're aware that the cost of weddings may seem incredibly daunting, particularly in the current economic climate. As such, we are keen to do our bit to ensure that a beautiful celebration at Lauderdale House remains a possibility for as many people as possible.

Here's our plan: From November to March, we are offering **free wedding ceremonies** to couples who choose to host their reception* with us in our stunning historic rooms, giving couples full use of both our Lower and Long Galleries. This means less time searching for multiple venues, a beautiful setting to celebrate your love, and more budget to dedicate to the party! Waterlow Park is a magical location all year round, and we hope this offer will help alleviate a bit of the stress when planning your big day. Give us a call for further details!

*Excludes Christmas period when the House is closed. Minimum reception length required - call for more information.



Photography Credits

Alexander Stevens - @alexstevensphotography
Pages, 16, 17 & 25

Balazs Hollenbach - walkinspotlight.com
Pages 13 (top) & 15 (right)

Becky Wood - beckywoodweddings.co.uk
Page 26

Belinda Burton - bellephotojourney.com
Page 15 (middle)

Claire Wakefield - clairowakefield.co.uk
Pages 27 (top right) & 11 (left & middle)

Grae - eyesclosedheadfirst.com
Pages 3, 8 (middle right & bottom), 21 (bottom left & right), 28 (top left & bottom left), 29

Isabelle Elliott - isabelleelliottphotography.com
Pages 1, 6, 7, 10, 15 (left)

Jake Owens - jakeowensphotography.com
Page 8 (middle left)

Jefferson Smith - jeffersonsmith.co.uk
Page 13 (bottom three)

Julia Legora - hiroartsphotography.com
Page 11 (bottom right)

Patatof Pictures - @patatof
Pages 14, 28 (bottom right) & 32

Steve Franck - stevefranck.com
Pages 20 & 21 (top left & right)

How to find us

Tube: Archway on Northern Line

Bus: 143, 210, 263, 310 (Waterlow Park),
W5 (to Hornsey Lane)

Car: We are situated on Highgate Hill (B519).
There is no off-street parking but there is
pay and display parking on Highgate Hill.
Parking outside the House is free from
midday and all day Saturday and Sunday.
Please always check the signage before you
park your vehicle.

lauderdalehouse.org.uk
enquiries@lauderdale.org.uk
020 8348 8716

Lauderdale
House

Lauderdale House
Waterlow Park, Highgate Hill
London N6 5HG

