

Lauderdale  
House



Led by

Art Fund\_



Supported using public funding by  
**ARTS COUNCIL  
ENGLAND**

colour  
me in



# The Wonders of Waterlow Park

Nature Trail & Activity Book

# Welcome to the Wonders of Waterlow Park activity trail!



This park used to be the garden of Lauderdale House. Built in 1582, the House is almost 500 years old! In 1889, Sir Sydney Waterlow, the last owner of Lauderdale House, gave the park to the people of Camden. This means that the park is your garden too!

Using the map in the middle of this booklet, follow the trail around the park to discover all of the amazing animals and plants that live here. Learn more about them by completing the activity on each page. There are also four seasonal activities at the back of this book. Come back throughout the year to complete them!

## Follow the trail

With many thanks to everyone who has helped make this booklet possible...

**The Friends of Waterlow Park**, a team of volunteers who care for and maintain the gardens around Lauderdale House and much of the park, whose knowledge of biodiversity and suggestions have been invaluable.

[www.waterlowpark.org.uk](http://www.waterlowpark.org.uk)

**The Wild Escape** is made possible with support from Arts Council England's National Lottery Project Grants, with additional support from Bloomberg Philanthropies, Kusuma Trust, Foyle Foundation and a group of generous individuals and trusts.

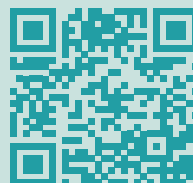
Illustrated by: **Trilby Piper (@paintingsbypiper)**

Printed by: **Urban Design and Print**

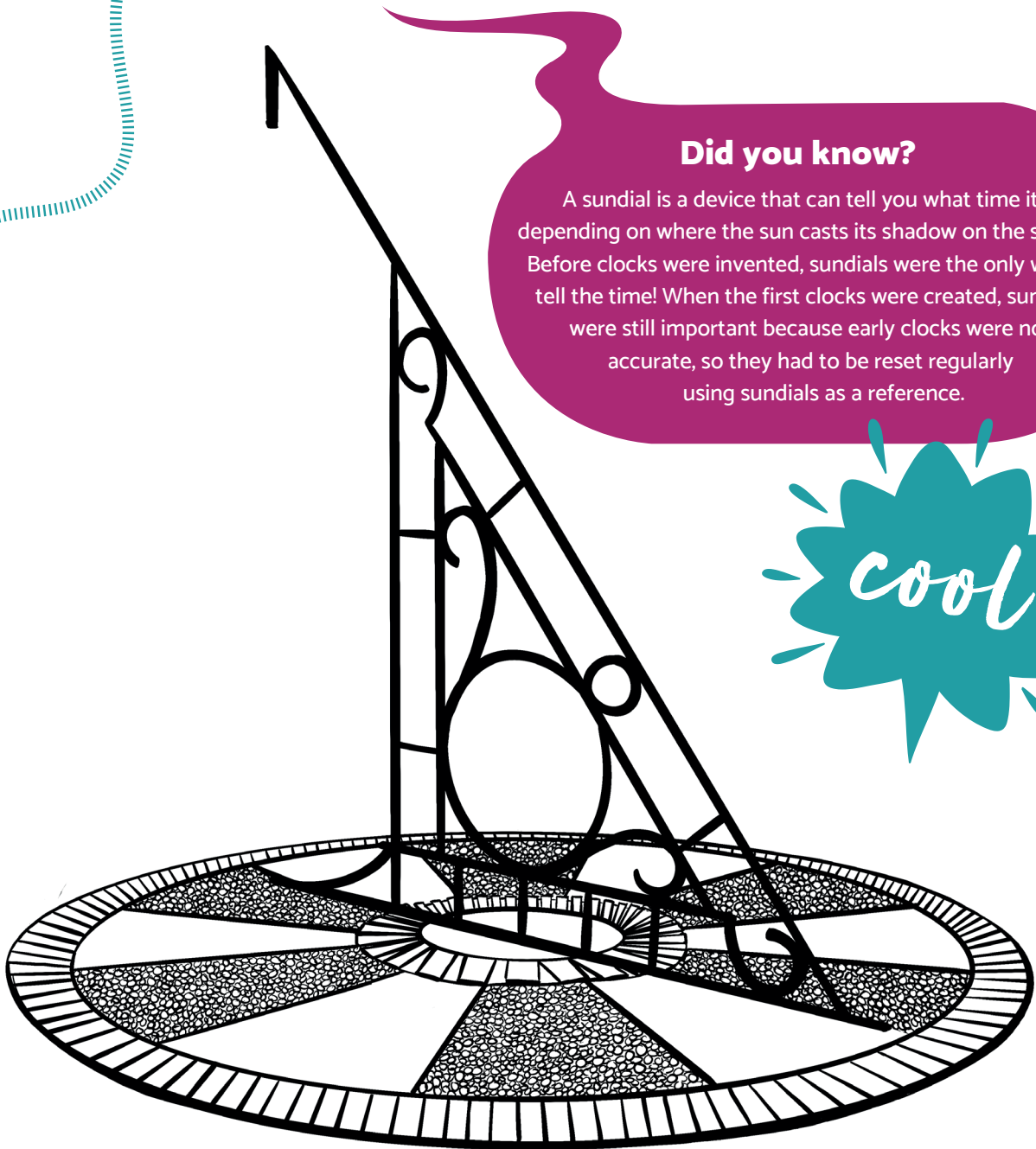
This booklet is made from recycled paper in order to keep it as sustainable as possible.

## Lauderdale House

**Lauderdale House** is a registered charity providing arts and education for all, whilst preserving this historic house. If you can afford it, please consider making a donation so we can continue to run free creative activities for families and young people. No matter how small, each donation makes a difference to someone's life. Scan the QR code below to donate or contact the Director **Katherine Ives** if you'd like to find out more: **020 8348 8716** or [kives@lauderdale.org.uk](mailto:kives@lauderdale.org.uk)



# The Sundial



## Did you know?

A sundial is a device that can tell you what time it is depending on where the sun casts its shadow on the sundial. Before clocks were invented, sundials were the only way to tell the time! When the first clocks were created, sundials were still important because early clocks were not accurate, so they had to be reset regularly using sundials as a reference.

cool

What is the weather like today?

.....

Can you tell what the time is?

.....



# Sir Sydney Waterlow

In 1889, Sir Sydney Waterlow, the last owner of Lauderdale House, gave the house and grounds to the London County Council 'for the enjoyment of Londoners.' The 29 acres of land then became a public park, a 'garden for the gardenless'. Today lots of different people use the park, including families, students and lots of people with dogs!

Have a seat on a bench next to the statue of him and see how many dogs you can count in 5 minutes. Write the number in the paw print below. Have a go at drawing some of the dogs you can see.

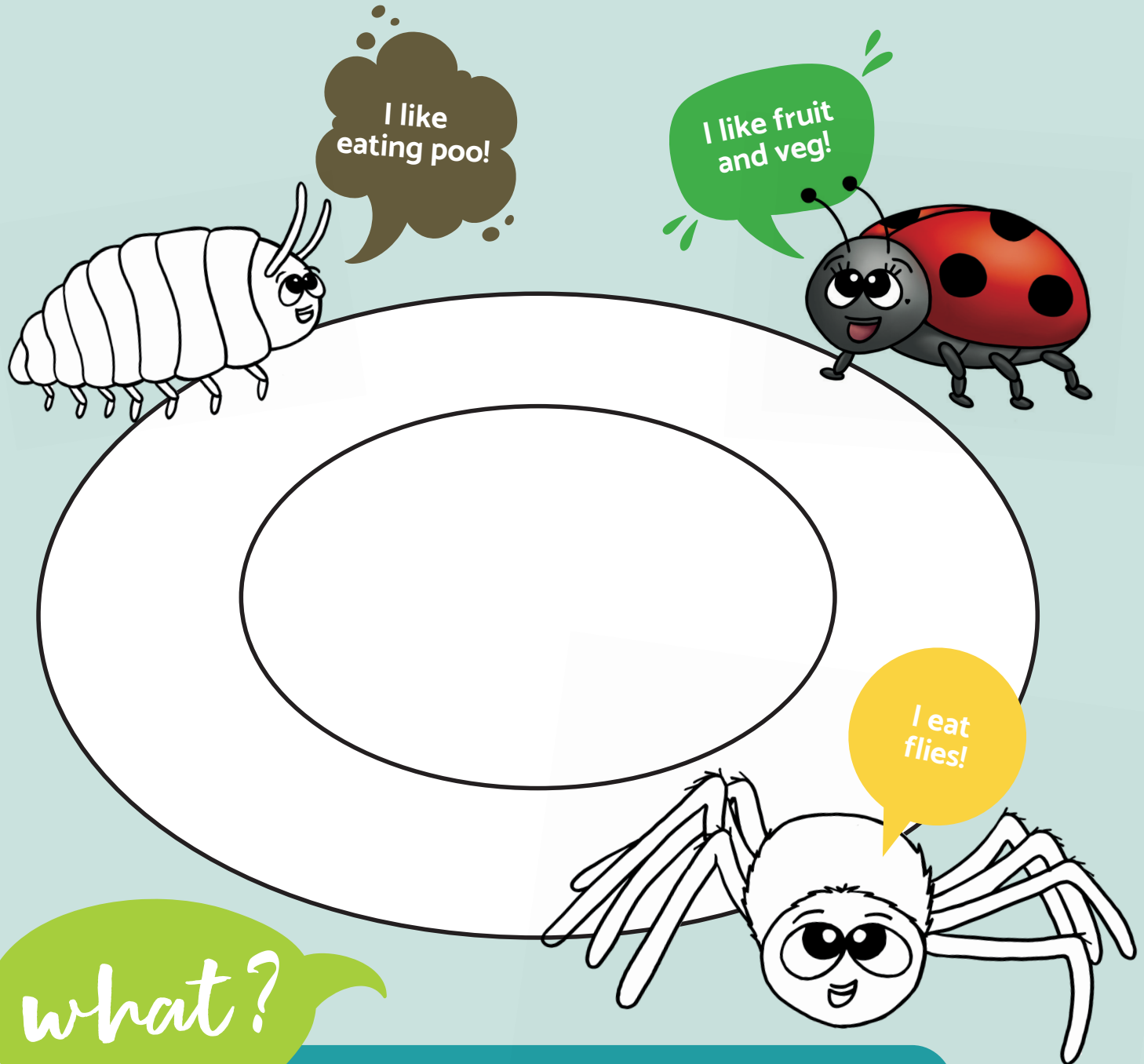
“a garden for the gardenless”





# Bug Hotel

Welcome to the bug hotel! Can you see any guests? Three of our residents, Mr Spider, Mrs Ladybird and Woody the Woodlouse are hungry, can you draw them a feast?



## Did you know?

Bug hotels benefit lots of different types of minibeasts and insects such as ladybirds, bees, spiders and woodlice. Minibeasts can use the bug hotel as a safe space to shelter, lay their eggs, raise their young, and seek refuge from predators.

# Holly Hide Away

Have a go at turning over the logs and seeing what insects and bugs you can find.

If this is too tricky, have a look for any insects crawling on the logs.

Draw what you find in the space below.



If you were an insect where would you hide?

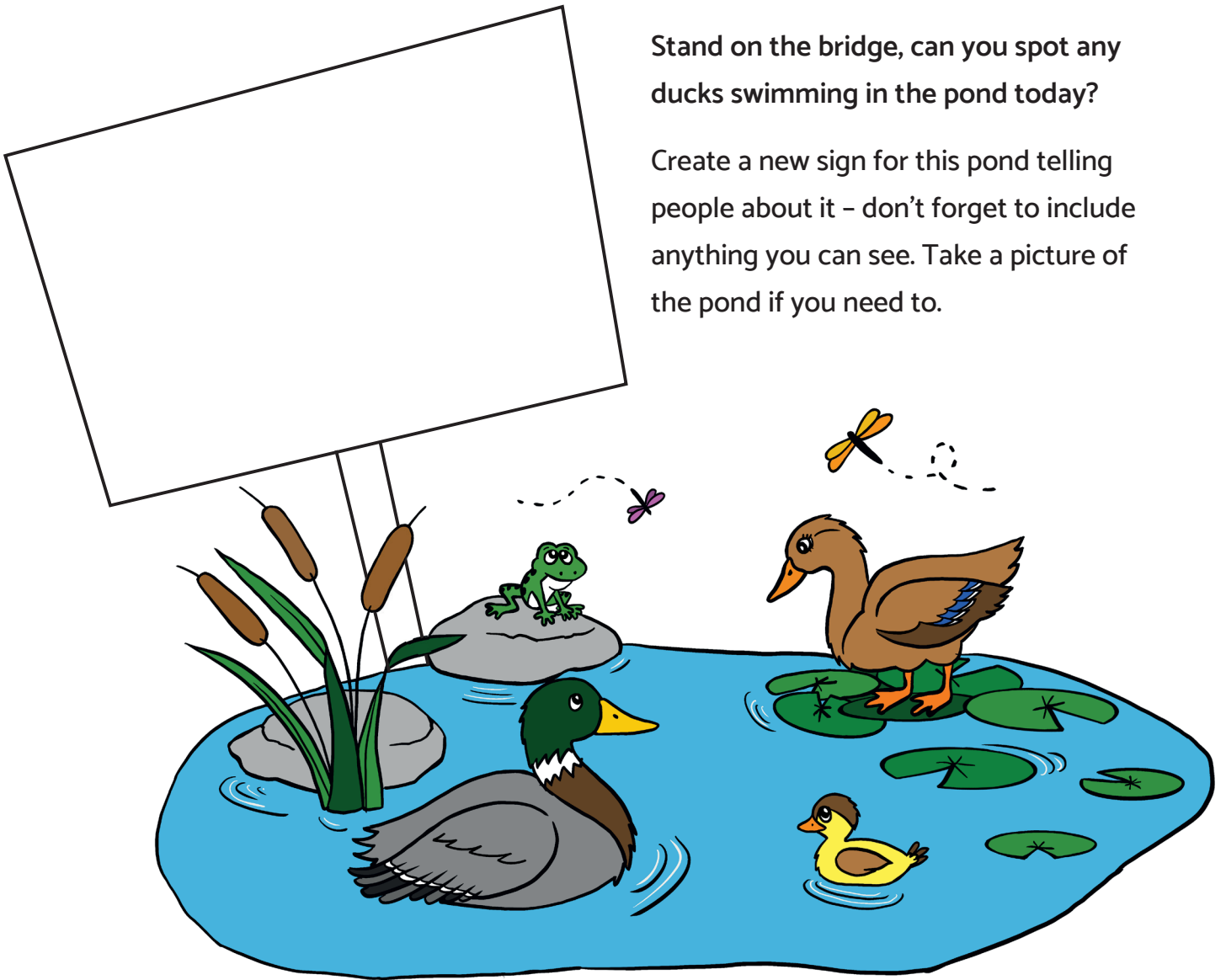
Quick! Play a game of hide and seek in the Holly Hide Away -  
and remember, think like an insect!

**Where was your best hiding place?**

---

Stand on the bridge, can you spot any ducks swimming in the pond today?

Create a new sign for this pond telling people about it - don't forget to include anything you can see. Take a picture of the pond if you need to.



## Middle Pond

wow

### Did you know?

Male and female ducks often have very different appearances. The males, called drakes, most often have extravagant and colourful feathers to attract a mate. Female duck feathers tend to be plainer, so that they can blend in with their surroundings and protect their nest and babies.

# Old Hollow Tree

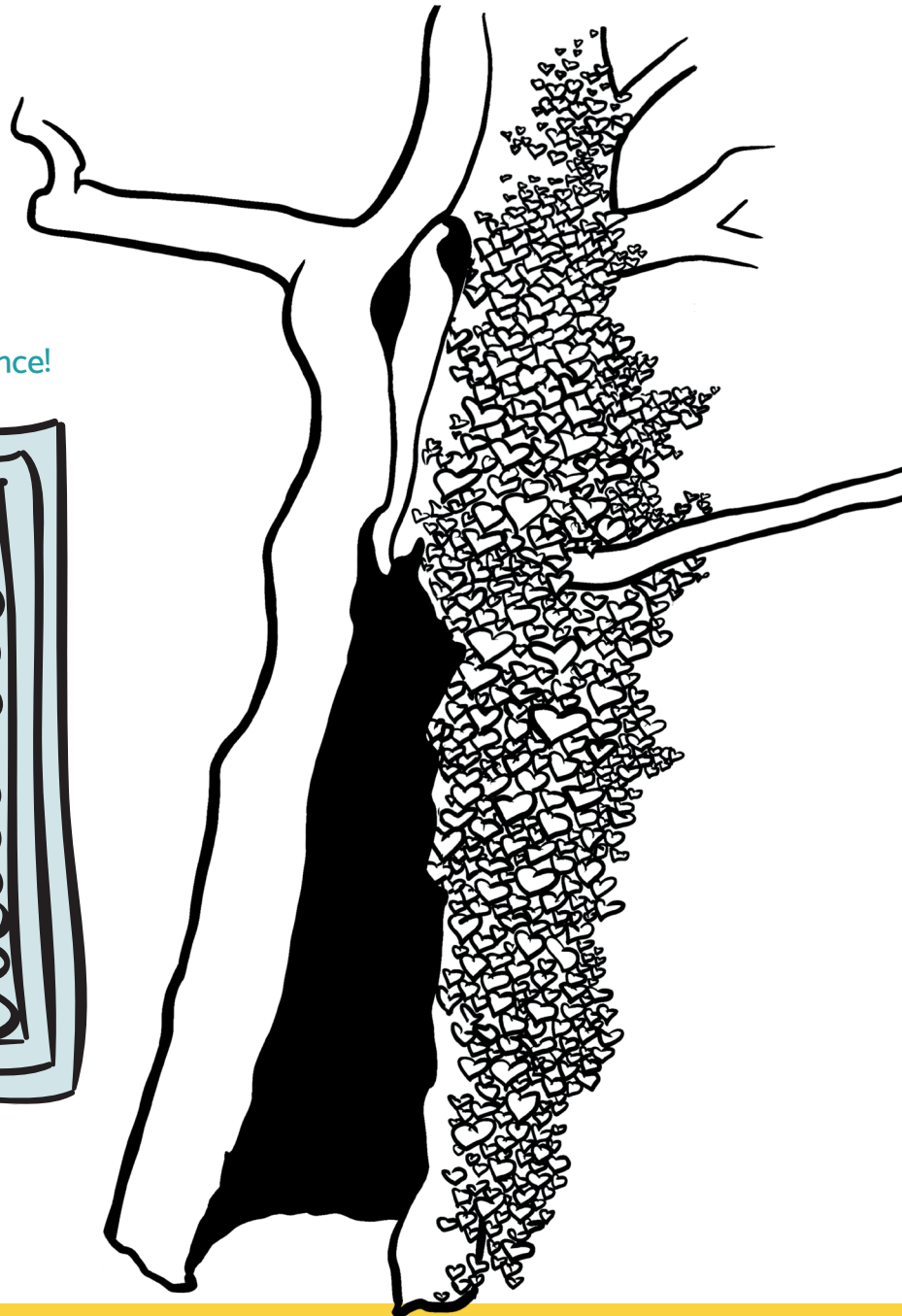
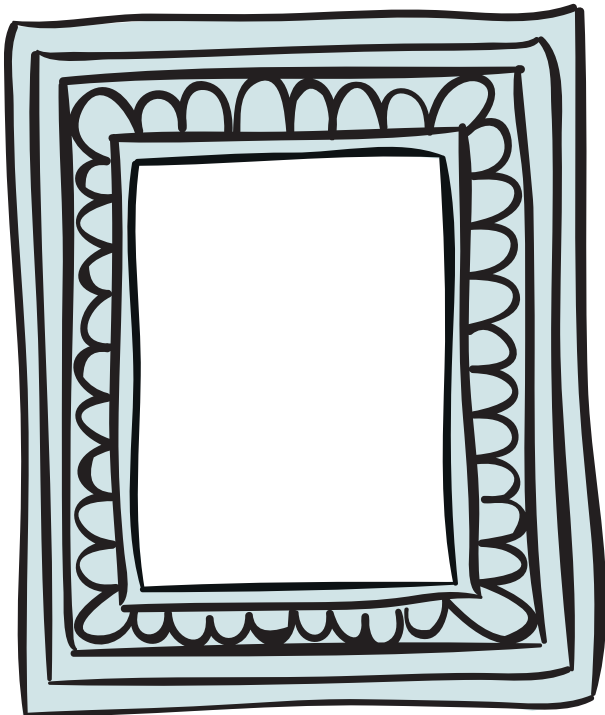
Look at the tree - is it alive? How can you tell?

This tree is an oak tree and is a great shelter for animals. What animals do you think would hide in here? List three below. You can draw them instead if you like.

1. ....
2. ....
3. ....

Take a selfie with the tree!

Make sure not to climb over the fence!





# Orchard

What fruits do you think would grow in this orchard, can you see any growing now?

Add fruits to the trees below - draw your own fruit tree if you'd like!



## Did you know?

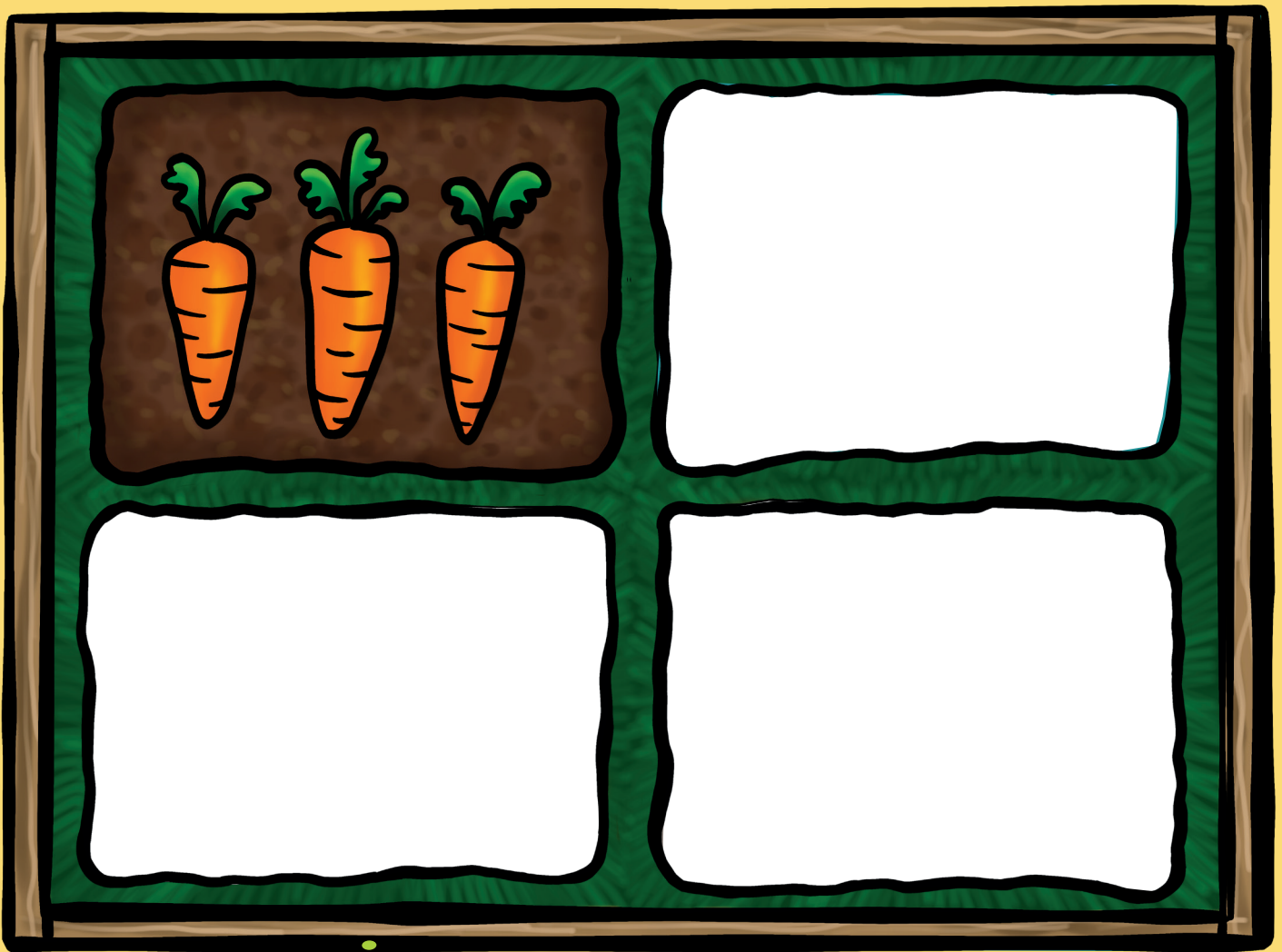
The definition of an 'orchard' is five or more trees together - how many trees are here? Are there enough for an orchard?

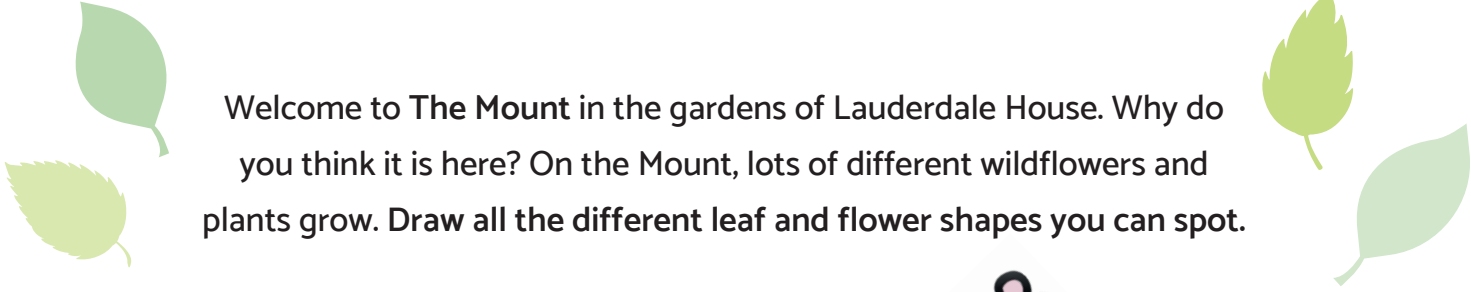


# Kitchen Garden

These are the kitchen gardens, where the community can come and grow food! Can you see any fruit or veg growing?

What would you grow in your kitchen garden - draw your favourite fruit and veg in the patches below!





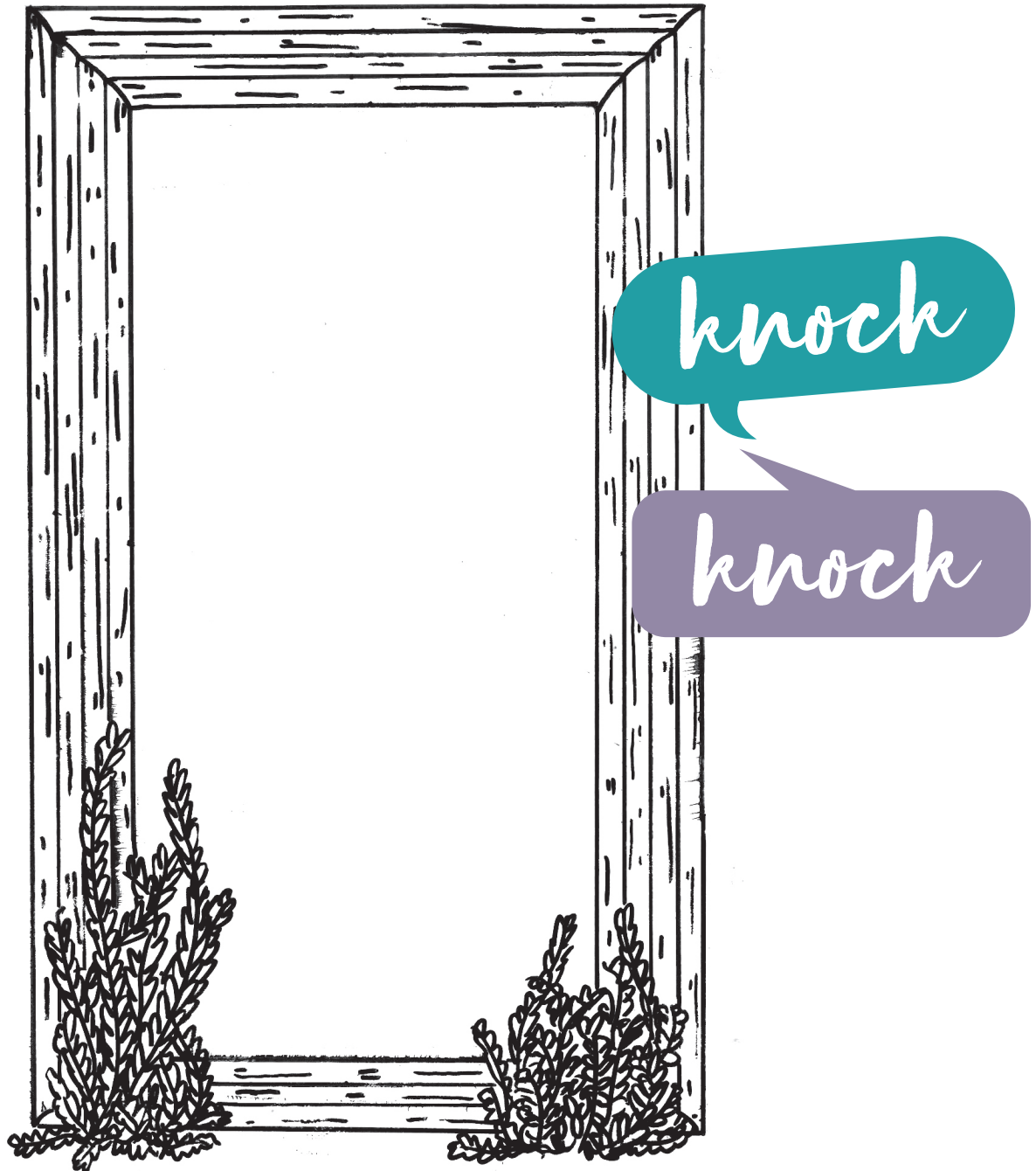
Welcome to The Mount in the gardens of Lauderdale House. Why do you think it is here? On the Mount, lots of different wildflowers and plants grow. Draw all the different leaf and flower shapes you can spot.

# The Mount



Turn around and look at the arches in the wall. What do you think they were used for? Maybe to house beehives? Or a place to keep candles to guide your way at night?

# Original Door



Here stands the original door to Lauderdale House. It would have led out to these beautiful gardens. Can you see all the different patterns on it? What can you spot?

Have a go at designing your own door that leads to your garden. What patterns would you decorate yours with?



# Spring

In Spring, all the wildlife in the park begins to wake up again, and the insects look for a safe place to live. Can you create a bug hotel for them to leave in the park or take home for your garden or balcony?

Head to the Upper Pond to see Waterlow Park's big bug hotel for inspiration - take some photos or draw some sketches below to use as a guide.

**Collect a mix of things like twigs, leaves, bark and pine cones. Then find some string and tie them together to create your own mini hotel.**

A decorative border of black and white line art illustrations of various flowers and butterflies, framing the central text. The flowers include daisies, tulips, and other multi-petaled blooms, while the butterflies are in various poses, some with detailed wing patterns.

# Summer

Summer is the time of year when butterflies are out and about in Waterlow Park. Spend some time in the park hunting for the butterflies. Take a photo when you find them - and make sure not to touch them.

**Have a go at drawing some of your favourites below!**



# Autumn

In Autumn, Waterlow Park begins to transform. Collect leaves, acorn hats, twigs and conker shells to create an autumnal collage. Remember to only collect things that are on the ground! You could create a collage or a particular animal or plant you've seen in the park, or a spooky scene!

**Use the space below to create your masterpiece!**



# Winter

While most of the wildlife is hibernating, check out all trees you can see – some are bare, some are green, and some are somewhere in between. Welcome to winter in Waterlow Park!

Pick your favourite tree or trees and take a picture. Then collect any twigs or leaves that are on the ground around your tree. Use these natural materials to create a painting tool. You can tie the leaves to the twigs with string, or cut the twigs to create bristles like a paintbrush.

**Use your tool to create the picture of the trees you took below!**



# Congratulations!

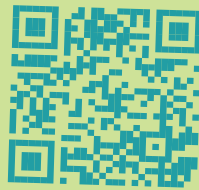
Well done for completing the Nature Trail! Don't forget you can use this booklet throughout the year and enjoy watching the seasons change.

Look carefully at the statues by the steps near the café at Lauderdale House.  
Who are the girl and boy?  
What do they do?  
Clue - they look after sheep!

Have you met our resident eagles?!  
You'll find them guarding the steps to the lower terrace - what do you think their names are? Be sure to search the park for real birds and check out the RSPB website for the next Big Garden Bird Watch!

Have you had fun?

If so, you can scan this code to make a donation that will mean more young people can enjoy free creative activities at Lauderdale House.



There are 2 families who live in the houses in the park and, in olden times, parkkeepers lived in Lauderdale House. Would you like to live the park? Draw the sort of house you would like.

Did you know? Over 150 years ago, one of the owners of Lauderdale House had a greenhouse with exploding plants! Why not draw an exploding plant?!



Please share your drawings and images with us at [enquiries@launderdale.org.uk](mailto:enquiries@launderdale.org.uk) - we'd love to see them!

Lauderdale  
House



Led by

Art Fund\_



Supported using public funding by  
ARTS COUNCIL  
ENGLAND



## Waterlow Park Views



Waterlow Park has many views,  
to be seen by me and you.

Home to what we know as Lauderdale House,  
located quite near the south.

Can you hear the trees,  
swishing in the breeze?

Thank you Sydney Waterlow,  
great owner of this park.

Who gave it to the public  
with all his heart.



Written by a 10-year old pupil as part of a previous educational programme.

Why not write your own  
poem inspired by Waterlow Park?  
Please send any work to  
[enquiries@lauderdale.org.uk](mailto:enquiries@lauderdale.org.uk)



Lauderdale House  
Waterlow Park  
Highgate Hill  
London N6 5HG

[www.lauderdale.org.uk](http://www.lauderdale.org.uk)  
[enquiries@lauderdale.org.uk](mailto:enquiries@lauderdale.org.uk)  
020 8348 8716

