

Arts Award Discover is an introductory award to encourage children and young people to participate in arts activities. By finishing this booklet, you will be able to get an Arts Award Discover certificate. Arts Award Discover is the first in a series of certificates for children and young people, from 0-25.

# Your Certificate

If you would like to gain a certificate, please place a £10 note in an envelope together with your completed Arts Award Discover booklet. You can post this to us or drop it through the front door. This price includes admin and moderation costs.

When sending, please remember to include your name, address and a contact number or email, so we can send your certificate back to you. If you have any queries please email:  
[ssabbagh@lauderdale.org.uk](mailto:ssabbagh@lauderdale.org.uk)

**Please ensure the entire booklet is complete before sending to us.**



Lauderdale House is a charity bringing arts and education to all through this amazing Tudor House. We receive no council or government core funding, relying on hire fees and ticket sales. Covid-19 means we have hardly any income. We know many of you are under pressure financially too, but if you can help, please consider making a donation to ensure our survival.

Call us on 020 8348 8716 or email us at [enquiries@lauderdale.org.uk](mailto:enquiries@lauderdale.org.uk)



## Art, History and Plants at Lauderdale House, Waterlow Park

Leave the computer at home and get outdoors for some creative fun! Explore the history of Lauderdale House and Waterlow Park while gaining an Arts Award Discover Certificate. This socially distant and family friendly creative activity is for 5-9 years olds, accompanied by an adult.

**First Name:**

**Surname:**

Please write or ask your parent/carer to write your name correctly as this will be the name that will be printed on the certificate. For more information on how to gain an Arts Award Certificate please check the back page..

Lauderdale  
House



# Welcome to Lauderdale House

The House was built in 1582 by Sir Richard Martin and his wife Dorcas Martin. Sir Richard was a Lord Mayor of London and Master of the Mint. Dorcas was a writer and publisher.

Over the years, the House has been home to a variety of people, including actress Nell Gwynn in the 1670s, the cabinetmaker John Cobb in the 1760s and the prominent Quaker William Mead in the 1670s.

It was named after the Duke of Lauderdale, John Maitland, who owned the House in the 1640s and 1660s. He worked closely with King Charles II.



This is a picture of Lauderdale House after the fire in 1963.

It has also been a hospital, a school and flats for park keepers. In 1963, it was sadly burnt down and its history could have ended there. But with much hard work by local people such as Nick Peacey and Peter Barber OBE, it is now an arts centre.

# Flowers and Plants at Lauderdale

Lauderdale House has always had big gardens, but not all of Waterlow Park was the garden for Lauderdale House. Waterlow Park was the garden for three different Houses which former resident Sydney Waterlow of Lauderdale House bought from others. The beautiful gardens attracted important people to live at the Highgate Houses over the years.



In 1889, Sir Sydney Waterlow gave the park and the House to the people of London. He wanted the park to be a

*"garden for the gardenless"*

Little would he know how important outdoor space would be in the current pandemic!

On Saturday 17th October 1891, London County Council invited the public to the opening of Waterlow Park. There was also music to entertain people.

## Exploring



### Key.

- 1 Historical plaque
- 2 Knot garden
- 3 Eagle statue
- 4 Sir Sydney Waterlow statue
- 5 Lauderdale House

Explore the historical objects and spaces on the map. See and share how creativity was used a long time ago.



# 1. Historical Plaque

This plaque may have been made by the famous textile designer William Morris. In 1893, builders came to fix the House and put up the plaque to celebrate the fact that people could still visit. It also marks the original entrance to Lauderdale House from 1582, over 400 years ago!

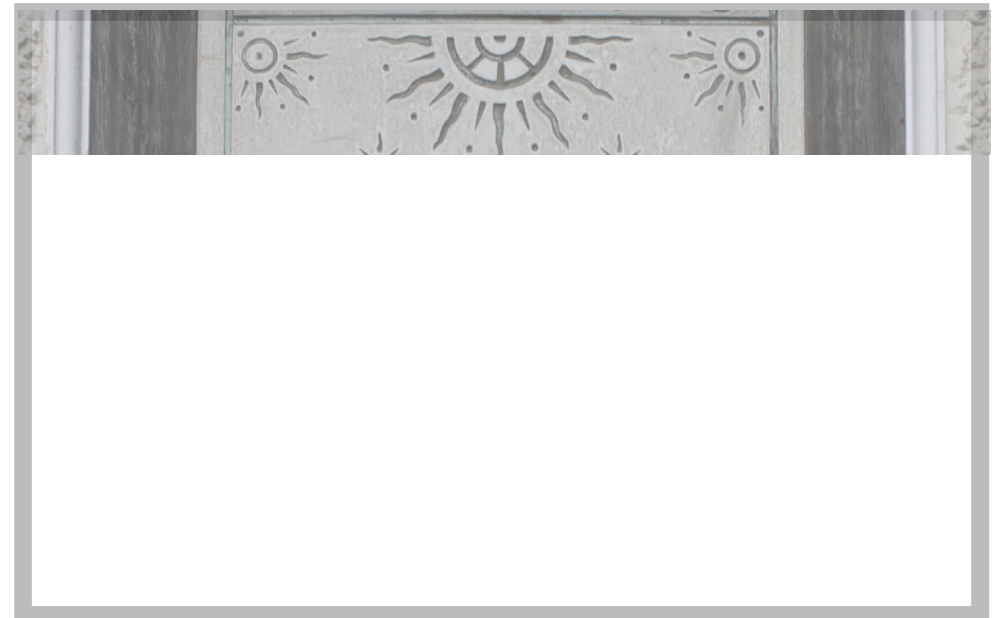


Circle words to describe it:

simple  
cool boring  
calm  
sad sick  
fun colourful  
peak  
symmetrical  
beautiful amazing  
geometric dull

Why do you think the artist chose suns and flowers to decorate the plaque?

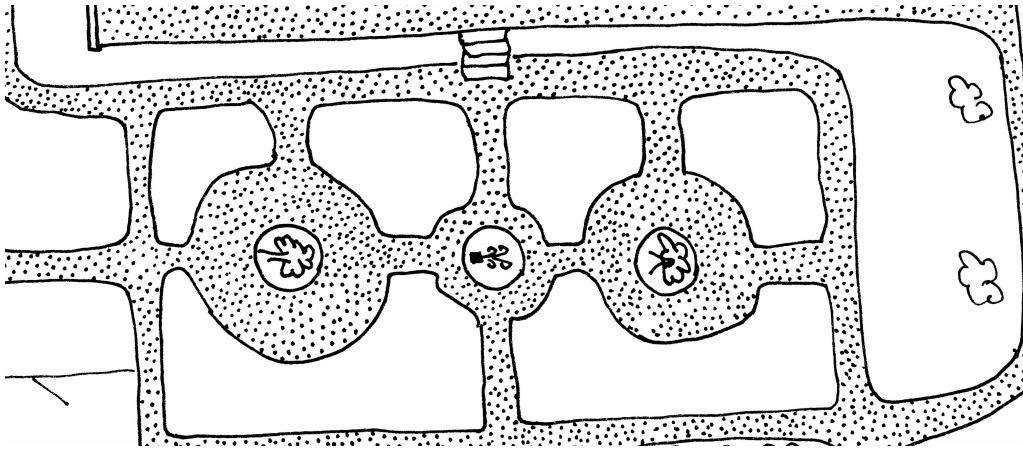
Can you write your name in the same style of handwriting that you can see on the plaque?





## 2. Knot Garden

Knot gardens became popular in the Tudor era of Elizabeth I. This is the same time that Lauderdale House was first built in 1582. Knot gardens are usually a small to medium sized square, packed full of brightly coloured plants. The colour and smell of the flowers, the shape of the flower beds and the decorative features such as the fountain all came from someone's imagination.



Draw your chosen plants and flowers in the shapes above. Can you colour in your knot garden? What colour flowers would you plant to make you and friends happy?

Can you draw a plan of your own knot garden? What shapes would you use? What plants, trees, benches or even sculptures would you put in your garden?

### 3. Eagle Statue

These eagles have guarded the steps of the gardens for 100s of years. Different owners of Lauderdale House have changed where the eagles are placed. Sadly one of them has a broken wing.



Can you help the eagle fly by completing the drawing?

# Eagle Statue

continued

When was the eagle made?

- a) 17th century    b) 18th century    c) 19th century

What materials did they use?

- a) Cardboard    b) Cement    c) Chocolate

What type of art is the eagle?

- a) Sculpture    b) Drawing    c) Painting

Flip the page to reveal the answers!

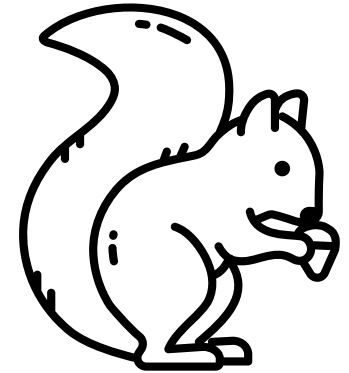


Answers:  
1. 19th century  
2. Cement  
3. Sculpture

# Nature Spotting

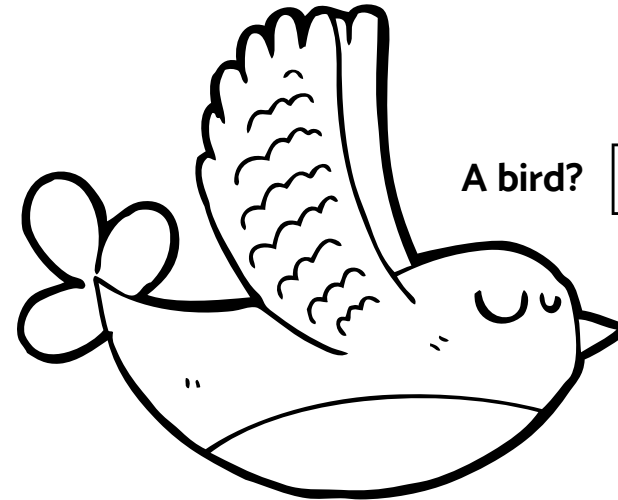
As you walk from the eagle to the next stop,  
can you spot...

A squirrel?



A dog?

A bird?



A butterfly?

You can tick the boxes as you go along. If you'd like, you  
can try colouring in the drawings, too...



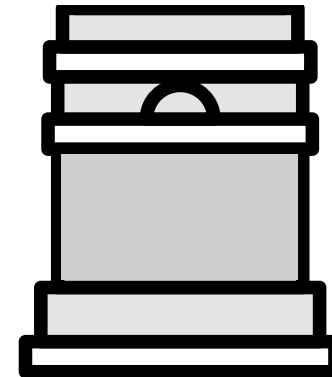
## 4. Sydney Waterlow



Sydney Waterlow was the last private owner of Lauderdale House and the Mayor of London. In 1889 he kindly gave the House and the grounds to the London County Council “for the enjoyment of Londoners”, just like you today! To celebrate his memory the statue was placed in Waterlow Park. Can you see in one hand he has a set of keys to the park; in the other hand, he has his trusty umbrella for the wet weather!

Can you write a creative description of what you have drawn on your plinth?

If you had a plinth where you lived, who or what would you put on that plinth. Draw on the plinth below who and what you choose to celebrate for everyone to see!



# 5. Lauderdale House

Did you know that in the 1960s, Lauderdale was home to park keepers and their families? In August 1963, if it wasn't for their trusted canine friend Schützen waking them up in the night, the whole family and Lauderdale House might not have been saved from fire!



Did you know that Schützen actually means 'protect' in German?

Did you know that the former president of Costa Rica, Jose Maria Montealegre lived in Lauderdale House? In the 1800s, as a young boy, he stayed at Lauderdale when it was a boarding school!

On the next page you'll find a double-page sketch of Lauderdale House. Can you colour it in?



# Share

If you could travel back in time, what fun fact would you share about what you've learnt? The ghosts of Lauderdale would love to hear from you!

Sharing what you have discovered with others is very important. Make sure you complete it to get your Arts Award Discover!

.....

.....

.....

.....

.....

.....

Once you've coloured in the drawing on the next page, you can take a picture of it and share it with us on social media:

 @lauderdalehouse

 @LauderdaleHouse

 @lauderdalehouse

